

Assembly Guide

Plexiglass Case For Nixie 5750



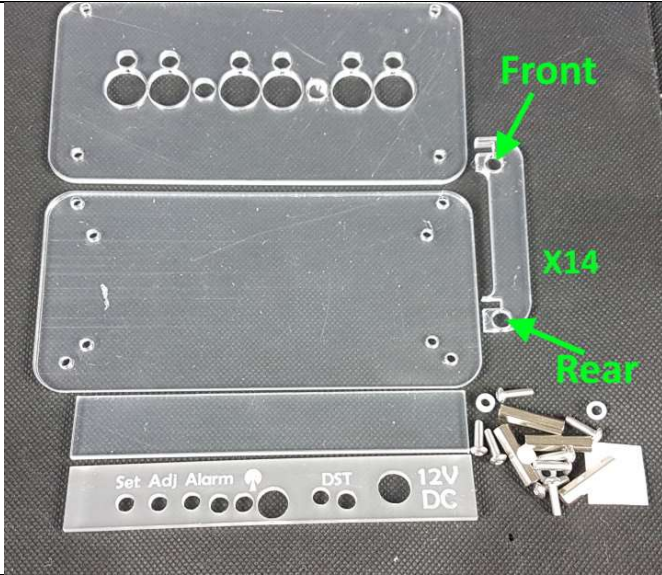

REVISION HISTORY

Issue Number	Date	Reason for Issue
1	01 August 2020	New document

1. APPLICABILITY

This case is suitable for the Our Nixie 5750 Nixie Clock Kit

2. PACK CONTENTS

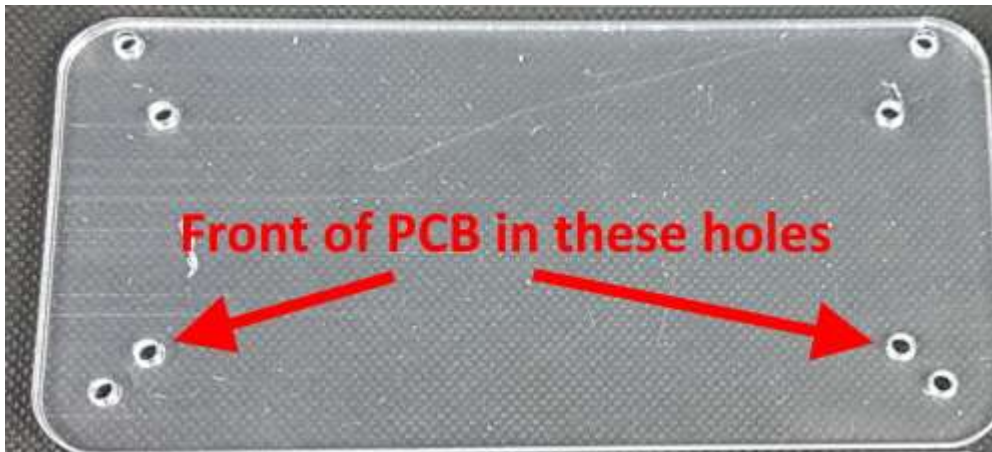
Component	Qty	Further info
<p>Plexi Panels. Note the grey color is the protective film which you must peel off to reveal the crystal clear material.</p>		
2mm plastic spacer / washer	4	
M3 X 10mm screw	8	
M3 X 6mm screw	4	
Small rubber foot	4	
M3 X 20mm hex threaded spacer	4	

3. ASSEMBLY NOTES

3.1 Remove all film from the Acrylic components

Ensure all protective film is removed from all parts.

- 3.2 Remove the 8mm M/F spacers that the clock is standing on, and screw the PCB to the base panel with the 6mm screws, with a 2mm plastic washer between the PCB and the baseplate. Note below which are the front and which are the back holes.



- 3.3 Place the rear panel loosely in position, and then screw the four 20mm spacers to the outer holes of the baseplate, but leave them loose, do not tighten the screws.



3.4 Place the side panels

Slide all 14 side panels over the 20mm spacers.



3.5 Front Panel

Simply slide the front panel into place in the slots provided.

3.6 Top Cover

Ensure correct orientation so that the RGB LEDs will pass through the small holes provided. Lower the cover and check that all 4 neon lamps pass through the holes provided.

Tighten the underside 10mm screws first, and then tighten the top screws. Finally apply the 4 rubber feet to the base of the clock.

