

Assembly Instructions And User Guide

Nixie Clock Type 'Large Tube Clock'



REVISION HISTORY

Issue Number	Date	Reason for Issue
3	20 November 2011	Various
2	10 November 2011	Errors corrected - R21-R26 value
1	1 November 2011	New document

1. INTRODUCTION

1.1 About the clock

Nixie clock type 'LTC' is a compact design with all components and tubes mounted on a single PCB. The efficient use of board space is achieved by using a multiplex design to drive the display tubes. Two high-voltage binary-to-decimal decoder ICs (K155ID1) are required, driving the six tubes in groups of three.

1.2 Clock Features

Nixie clock type 'LTC' has the following features:

- Hours, Minutes and Seconds display
- 12 or 24 hour modes
- Date display in either DD.MM.YY or MM.DD.YY format
- Alarm, with programmable snooze period
- Programmable date display each minute
- Attractive LED tube lighting
- Uses a Quartz Crystal Oscillator as the timebase
- Optional DCF / WWVB / MSF / GPS synchronisation with status indicator LED
- Supercapacitor backup. Keeps time during short power outages
- Simple time setting using two buttons
- Programmable leading zero blanking
- Five programmable neon colon settings (Flashing AM/PM indication, illuminated AM/PM indication, both flashing, both on, both off)
- Maintains time during setup mode, eg. When changing between Standard Time and Daylight Savings Time
- Seconds can be reset to zero to precisely the set time
- Programmable night mode - blanked or dimmed display to save tubes or prevent sleep disturbance
- Separate modes for colon neons during night mode
- Standard or fading change of digits
- 'Slot Machine' Cathode poisoning prevention routine
- All user preferences stored to non-volatile memory

1.3 SAFETY

DANGER: The clock pcb includes a switched-mode voltage booster circuit. This generates nominally 170 Volts DC, but is capable of generating up to 300 Volts before adjustment. Assembly may only be undertaken by individuals who are suitably qualified and experienced in electronics assembly, and are familiar with safe procedures for working with high voltages. If in doubt, refer to a suitably qualified engineer before proceeding.

The voltages generated by this circuit can give a potentially LETHAL ELECTRIC SHOCK.

DISCLAIMER: This product is supplied as a kit of parts, intended only for suitably qualified electronic engineers, who are suitably qualified and experienced in electronics assembly, and are familiar with safe procedures for working with high voltages. The supplier, his agents or associates accept no liability for any damage, injury or death arising from the use of this kit of parts.

This is not a finished product, and the person assembling the kit is responsible for ensuring that the finished product complies with any applicable local regulations governing electrical equipment, eg. UL, CE, VDE.

2. TOOLS AND EQUIPMENT REQUIRED

2.1 Tools required to assemble the PCB.

The following tools will be required to assemble the PCB:

- Soldering iron with a small tip (1-2 mm)
- Wire cutters (TIP: A small pair of nail clippers works very well for this function)
- Wire strippers (TIP: A small pair of scissors is quite suitable)
- Multimeter for voltage tests and for identifying the resistors.
- Small flat screwdriver for adjusting the high voltage supply

2.2 Materials you will need.

Solder – lead / tin solder is preferred. Lead free solder, as now required to be used in commercial products in Europe, has a much higher melting point and can be very hard to work with.

Desoldering wick (braid) can be useful if you accidentally create solder bridges between adjacent solder joints.

2.3 Other items you will need.

The clock kit does not include a power adapter. This is because the kit is sold to many countries around the world, each with very different household mains outlet socket types. It is more efficient for the user to buy a suitable adapter locally. This saves shipping a heavy adapter with the kit, and also the extra costs of managing stocks of many varied power adapters. If you are using a WWVB, DCF or MSF receiver avoid cheap Chinese switching power supplies, as they can cause interference problems.

The type of power adapter can be obtained at very low cost. The following type of adapter should be obtained and used with the kit:

Output 12V DC

Minimum power output capability of 500 mA

Output plug: 2.1mm pin, centre positive.

A suitable adapter is shown below:



3. LIST OF COMPONENTS

3.1 Table of components

Circuit Designation	Part Description
Resistors	
R1	270 Ω , ¼ Watt
R2	270 Ω , ¼ Watt
R3	4.3K Ω , ¼ Watt
R4	620K Ω , ¼ Watt
R5	4.3K Ω , ¼ Watt
R6, R7	270 Ω , ¼ Watt
R8 – R14	4.3K Ω , ¼ Watt
R15- R17	390K Ω , ¼ Watt
R18 – R20	Not installed
R21 – R26	2.7K Ω , ¼ Watt
R27, R28	4.3K Ω , ¼ Watt
R29, R30	390K Ω , ¼ Watt
R37	Not installed
R38, R39	270 Ω , ¼ Watt
Capacitors	
C1	470 μ F, 16-25V, Electrolytic
C2	100 μ F, 16-25V, Electrolytic
C3	330pF Ceramic
C4	100nF Ceramic
C5	470 μ F, 16-25V, Low ESR
C6	33pF Ceramic
C7	100nF Ceramic
C8	1 μ F, 250V, Electrolytic
C9	0.1F
C10	100nF Ceramic
C11	33pF Ceramic
C12	33pF Ceramic
C13	100nF Ceramic
Transistors	
Q1	BC639
Q2	BC640
Q3	IRFxxx MOSFET
Q4 – Q7	MPSA42
Q8 – Q10	MPSA92
Q11- Q13	MPSA42
Diodes	
D1, D2	1N5819
D3	UF4004
D4	5mm Green LED
D5	5mm Orange LED
Integrated Circuits	
IC1	7805 5V Voltage regulator
IC2	MC34063A
IC3	PIC16F1936 8-bit Microcontroller
IC3, IC4	74141 / K155ID1 Nixie driver

Miscellaneous	
L1	100 μ H Axial inductor
NE1, NE2	6mm Wire ended neon lamp
SW1, SW2, SW3	Miniature push button
VR1	1K Potentiometer
IC Sockets	8 Way DIP IC socket for IC2 28 Way DIP IC socket for IC3 2 X 16 Way DIP IC sockets for IC4, IC5
J1	2.1mm PCB Power socket
GPS / RFT	6 Way mini DIN PCB socket
LS1	Piezo sounder
FUSE	500mA Resettable fuse
Insulation	Clear insulation for neons
X1	32.768KHz Watch crystal
Socket receptacles	66 X 1mm Socket receptacles

Lighting Pack:

The optional pack contains the extra components needed for the tube underlighting:

Circuit Designation	Part Description
R31 – R36	270 Ω , 1/4 Watt
D6a – D11c	1206 SMD LEDs (18 total + 2 spare) Blue, Yellow, Green or Pink
Q14	2N7000 MOSFET

The resistors used in the kit are 1% tolerance metal film. They are marked with 4 coloured bands to identify the value. However it is sometimes unclear in which direction the bands should be read. Therefore, we recommend that the resistors be identified with a multimeter.

3.2 Parts list / Packing sheet

Part Description	Quantity
Resistors	
270Ω, ¼ Watt	6
4.3KΩ, ¼ Watt	11
2.7KΩ, ¼ Watt	6
390KΩ, ¼ Watt	11
620KΩ, ¼ Watt	1
Capacitors	
470µF, 16-25V, Electrolytic	2
100µF, 16-25V, Electrolytic	1
1µF, 250V, Electrolytic	1
100nF, Ceramic	4
33pF, Ceramic	3
0.1F	1
330pF, Ceramic	1
Transistors	
IRFxxx MOSFET	1
BC639	1
BC640	1
MPSA42	7
MPSA92	3
Diodes	
1N5819	2
UF4004 Fast recovery diode	1
5mm Green LED	1
5mm Orange LED	1
Integrated Circuits	
7805 5V Voltage regulator	1
MC34063A	1
PIC16Fxxxx 8-bit Microcontroller	1
74141 / K155ID1 Nixie driver	2
Miscellaneous	
100 µH Axial inductor	1
6mm Wire ended neon lamp	2
Miniature push button	3
1K Potentiometer	1
8 Way DIP IC Socket	1
28 Way DIP IC Socket	1
16 Way DIP IC Socket	2
2.1mm PCB Power socket	1
6 Way mini DIN PCB socket	1
Piezo sounder	1
500mA Resettable fuse	1
6 cm Clear insulation	1
32.768KHz watch crystal	1
1mm Socket receptacles	66

Lighting Pack:

The optional pack contains the extra components needed for the tube underlighting:

270Ω, ¼ Watt resistor	6
1206 SMD Resistors Blue, Yellow, Green or Pink	20
2N7000 MOSFET	1

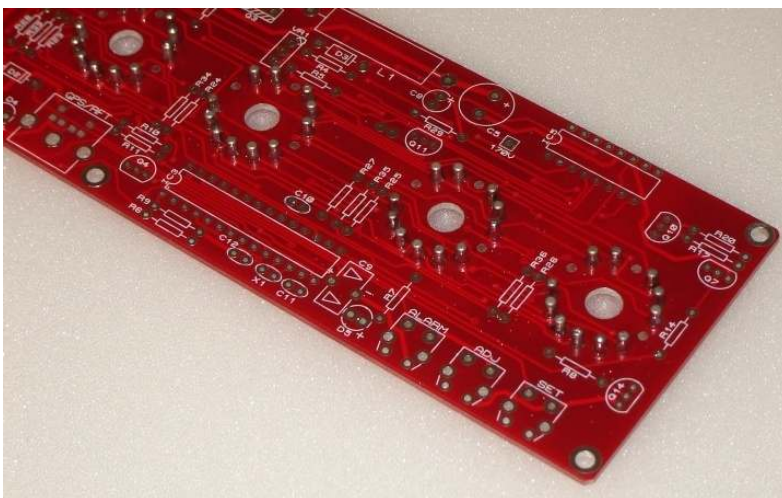
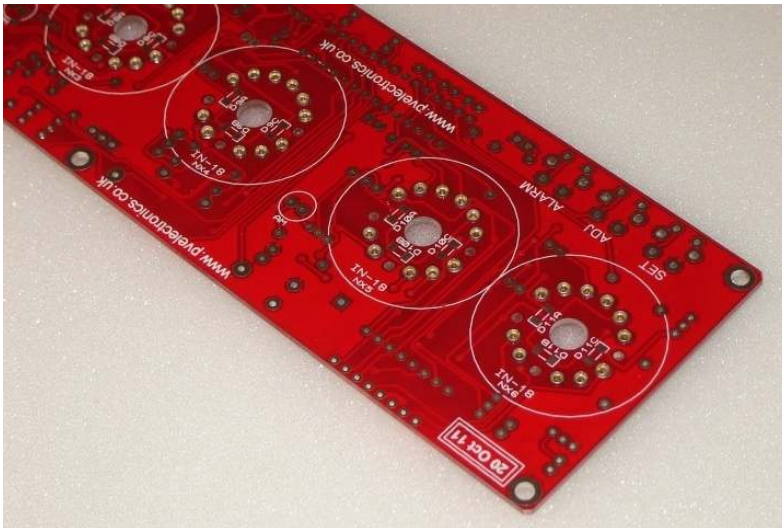
It is recommended that the kit is checked against the lists above, to ensure all parts are present before commencing assembly. Don't be alarmed if there are some extra components, as some component bags are shared between different kit types. Also check our kit updates document on our website downloads page. This details any changes to components, or substitutions that have been made due to part availability.

4. ASSEMBLY OF THE PCB

NOTE THAT THESE INSTRUCTIONS ARE SHARED BETWEEN SEVERAL VERY SIMILAR CLOCK TYPES. YOUR PCB MAY NOT LOOK EXACTLY LIKE THE ONE PICTURED.

4.1 1mm Sockets For Nixie Tubes

There are 66 individual sockets that need to be soldered in. The best method is as follows. Place all sockets into the holes, noting that for each tube there are three holes that have no socket as marked on the PCB. When all sockets have been placed, place a flat and hard object over the top of the sockets, and turn the PCB over so you can solder from the underside. Be sure to insert the sockets FROM the bottom side of the PCB – the side with the tube and markings.



4.2 Low Voltage Power components:

J1, FUSE

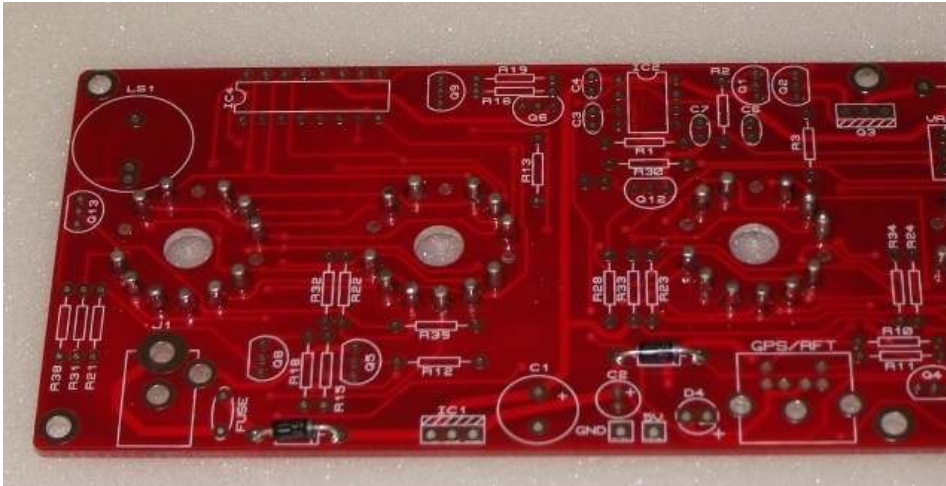
D1, D2 - 1N5819

IC1 - 7805

C1 - 470 μ F

C2 - 100 μ F

Start by installing D1 and D2. Align the white band on the components with the band marked on the PCB.



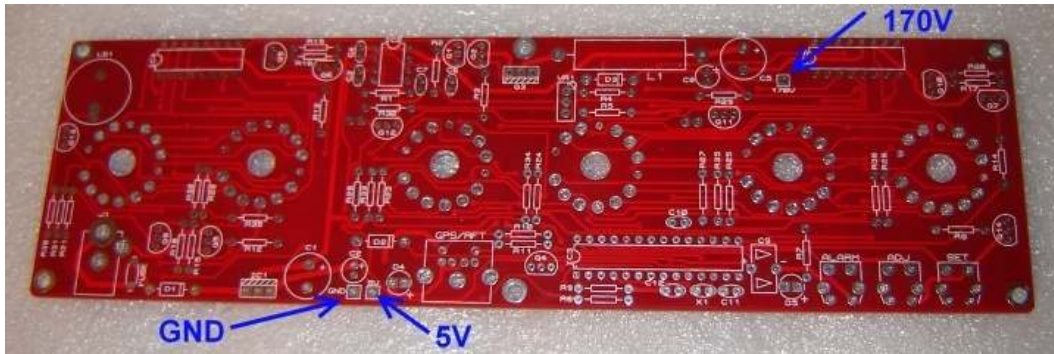
Proceed to mount the other components of this step. The two capacitors are polarised: the longer lead goes in the hole marked '+'. Keep the IC1 mounted vertical for the moment. It can be bent over to lower the profile of the board at the end of assembly.

The PCB should now look like the picture below:



4.2 Testing Stage 1 Power Components.

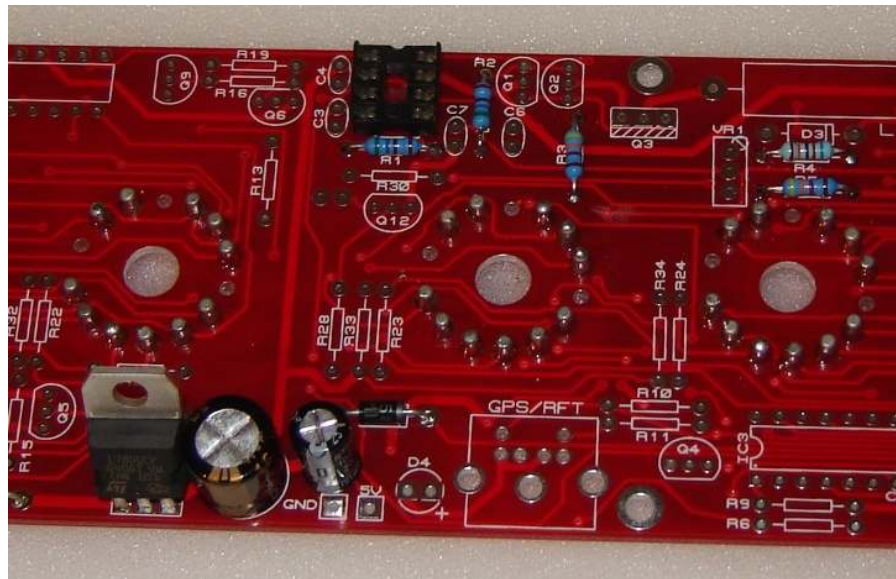
Identify the test GND, 5V and 170V test points as shown below.



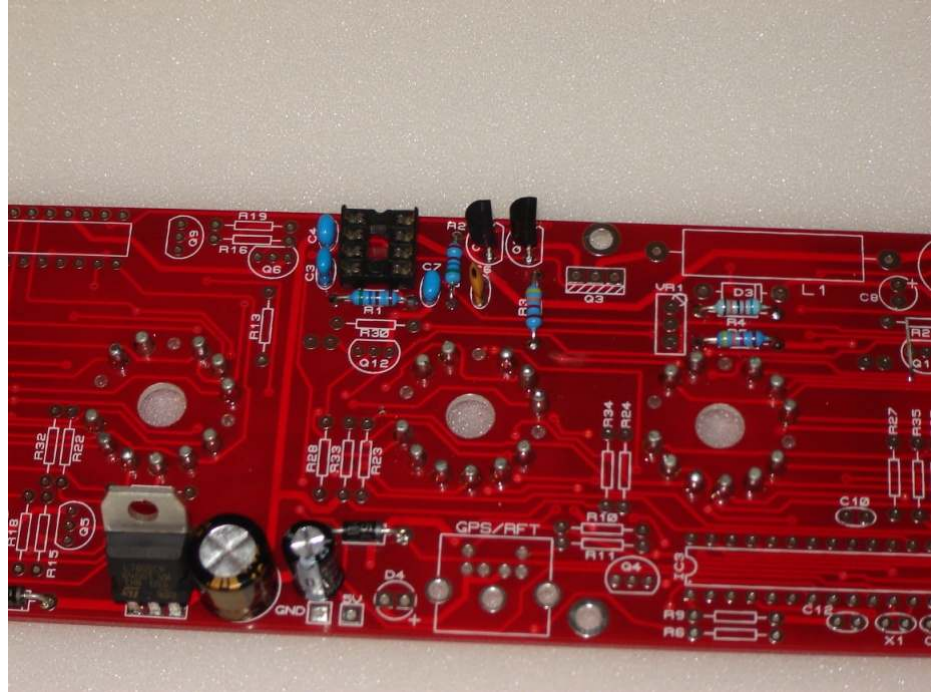
Plug in the power supply, and then test using a DC voltmeter: Touch the black probe on the GND test point and the red probe on the 5V test point. The voltage should measure between 4.9 and 5.1 Volts. If not, disconnect power and check your work. Do not proceed with the assembly until the error is corrected. Once the test is completed, disconnect the power.

4.3 High Voltage Generator components.

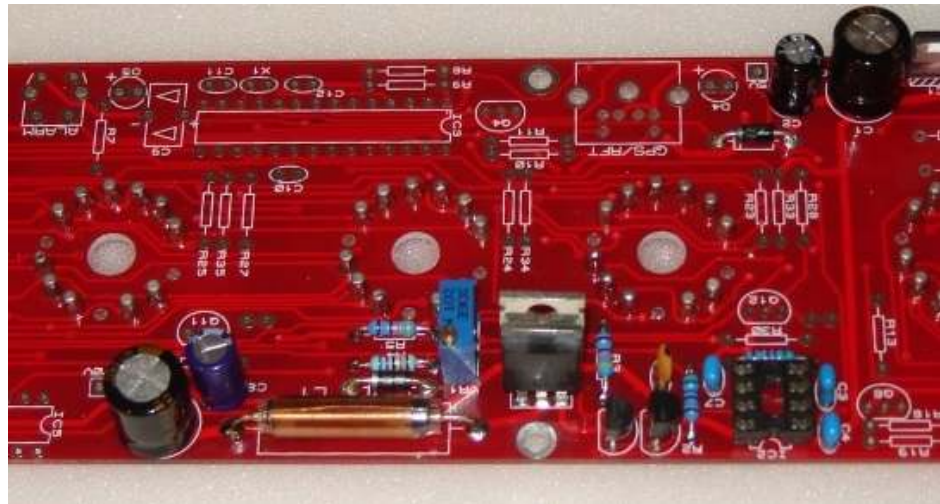
Socket for IC2
R1, R2 - 270 Ω
R3 - 4.3K Ω
R4 - 620K Ω
R5 - 4.3K Ω



- 4.4 Q1 - BC639
 Q2 - BC640
 C3 - 330pF
 C4 - 100nF
 C6 - 33pF
 C7 - 100nF



- 4.5 Q3 - IRFxxx
 D3 - UF4004
 L1 - Inductor
 C5 - 470µF
 C8 - 1µF
 VR1 - 1K Pot

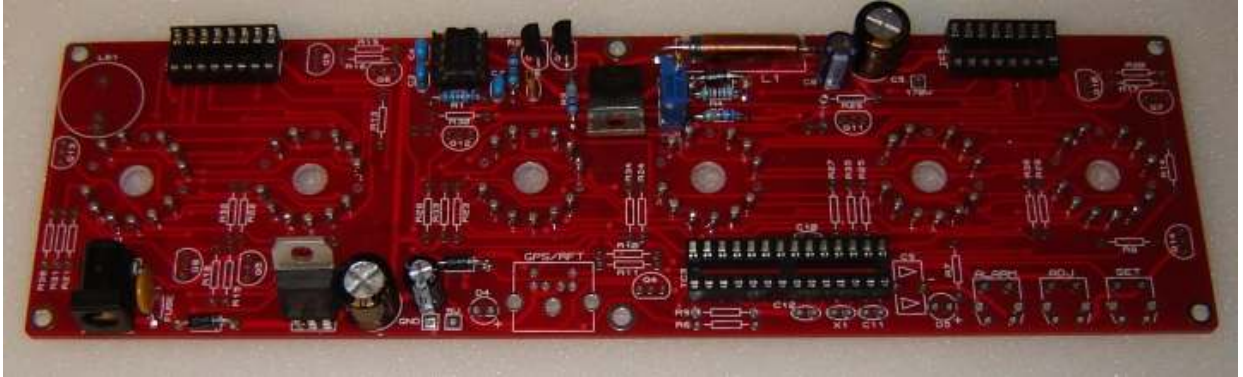


4.6 High Voltage Generator Test

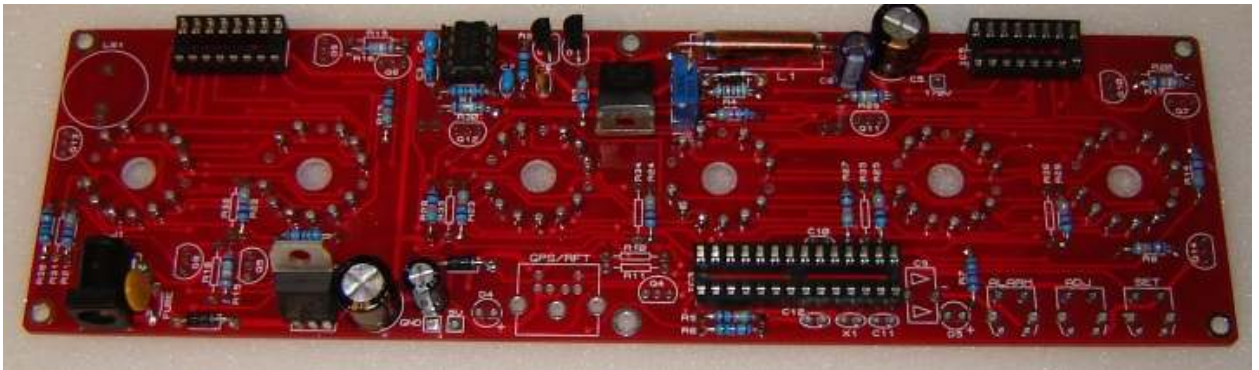
- Refer to the warnings on page 4.
- Insert IC2 into then socket, making sure it is correctly oriented.
- Power up the PCB, and using the GND and 170V test points, measure the high voltage generated. It should be initially between 150 and 190V. -
- Using the VR1 brass screw, slowly adjust the screw until the voltage is between 170 and 175V. Disconnect the power supply.

4.7 Sockets for IC3, IC4, IC5

Align the notch on the body of each socket with the corresponding mark on the PCB



- 4.8 R6, R7, R38, R39 (all 270 Ω)**
R8, R9, R12, R13, R14, R27, R28(all 4.3K Ω)
R21 - R26 (all 2.7K Ω)
R15, R16, R17, R29, R30 (all 390 K Ω)

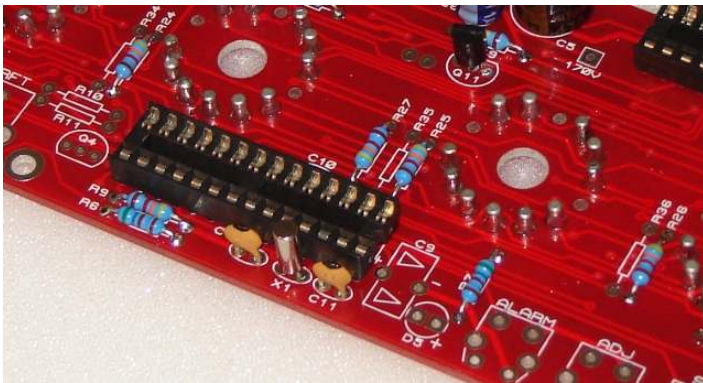


- 4.9 Q5, Q6, Q7, Q11, Q12, Q13 (all MPA42)**
Q8, Q9, Q10 (all MPSA92)



4.10 X1 - 32.768 KHz Crystal C11, C12 (33 pF)

These are the timekeeping components: 32.768KHz crystal and two load capacitors. See below:



4.11 Tube Test

At this stage, it is desirable and possible to test that the tube drivers and micro-controller are functioning correctly. Making the test at this point, before the remaining components are installed will make troubleshooting and diagnosis simpler if there is a problem.

Insert IC3 (PIC16F1936) and IC4, IC5 (both K155ID1) into their sockets. Be very careful to align the notch on the IC body with corresponding PCB markings.

Then insert 6 X IN-18 Nixie tubes into the sockets.

Now power up the PCB, and the tubes should proceed to all count in synchronisation from 0 to 9 repeatedly. If this does not happen, stop and check your work carefully before proceeding.

4.12 GPS / RFT Connector

LS1 - Piezo sounder

Set, Adj, Alarm Buttons

C9 - 0.1 μ F Supercapacitor

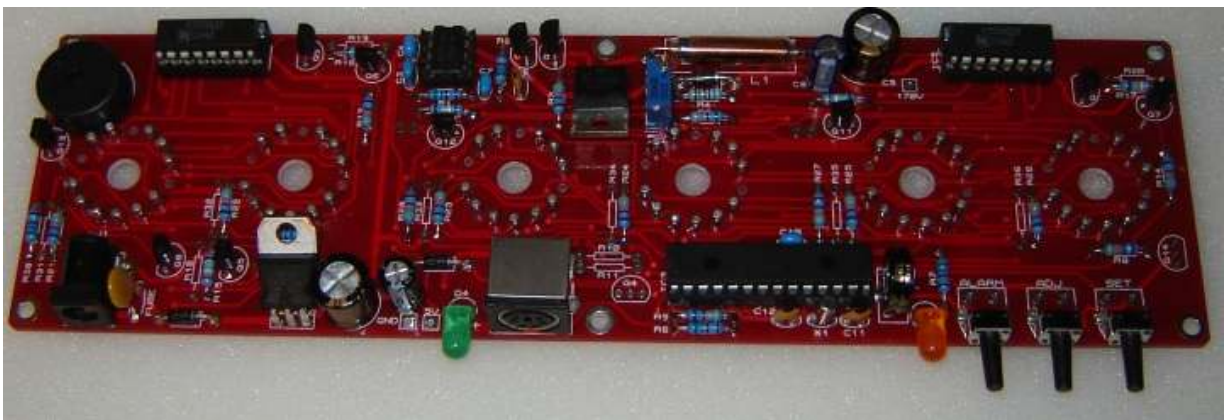
C10 - 100nF

D4 - Green GPS / RFT LED

D5 - Orange Alarm LED

Note that if you won't be using a Radio Time Receiver Module, then you can omit the GPS / RFT Connector and LED D4.

C9 is a polarised component. The arrows on the component body should match the arrows on the PCB marking.



If you will be using one of our cases, align the 2 LEDs as shown below. The longer lead of each LED goes in the hole marked '+'.
The longer lead of each LED goes in the hole marked '+'.



4.13 AM, PM Colon Neon Lamps

The 2 neons can now be mounted at a suitable height. Use small lengths of the clear insulation supplied on the leads to prevent shorts.

5. OPTIONAL COMPONENTS

5.1 GPS Input Components

If you will be using a GPS time receiver module, install the following components:

GPS / RFT Connector (if you didn't already install it in step 4.12)

R10, R11 (4.3K Ω)

Q4 (MPSA42)

5.3 DCF / WWVB / MSF Receiver Components

If you will be using a DCF, WWVB or MSF time receiver module, install the following component:

C13 - 100nF

5.2 Tube Underlighting Pack

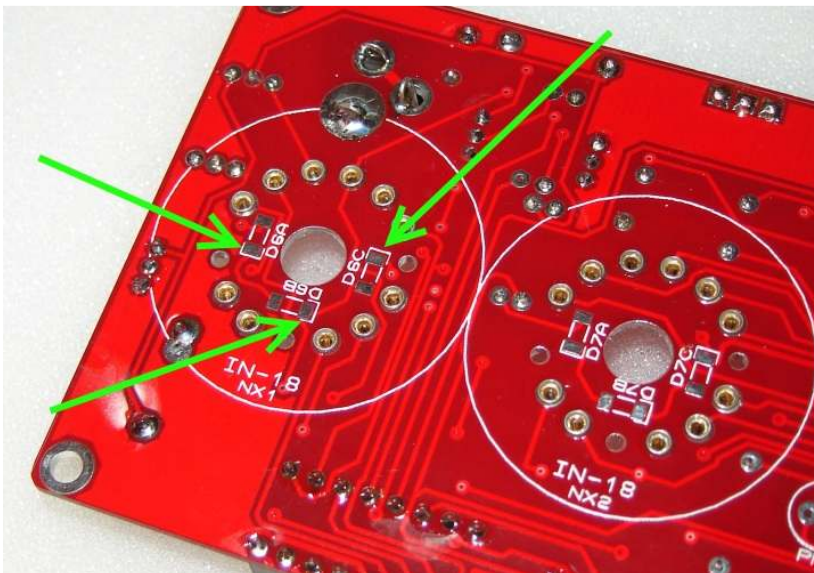
Q14 - 2N7000

R31 - R36 (all 270 Ω)

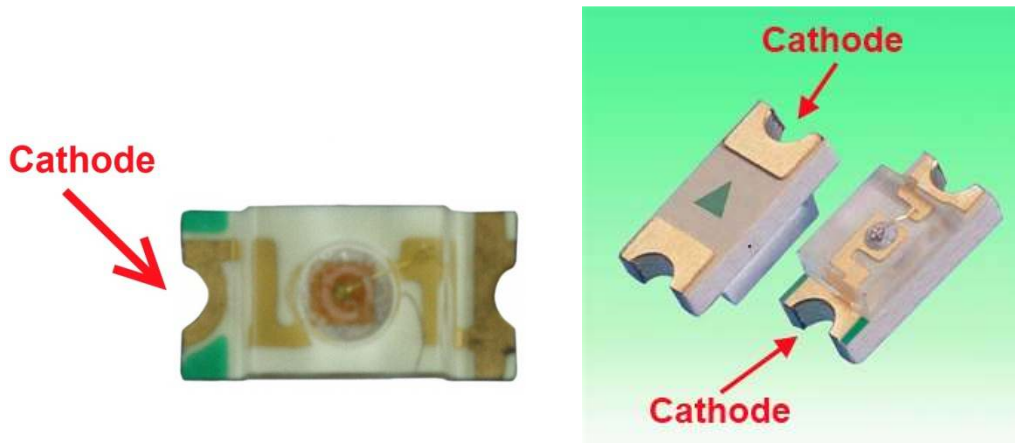
D6A - D11C (18 X 1206 size SMD LEDs)

Three 1206 LEDs per tube provide attractive tube underlighting. Start by installing Q14 and the six 270R resistors.

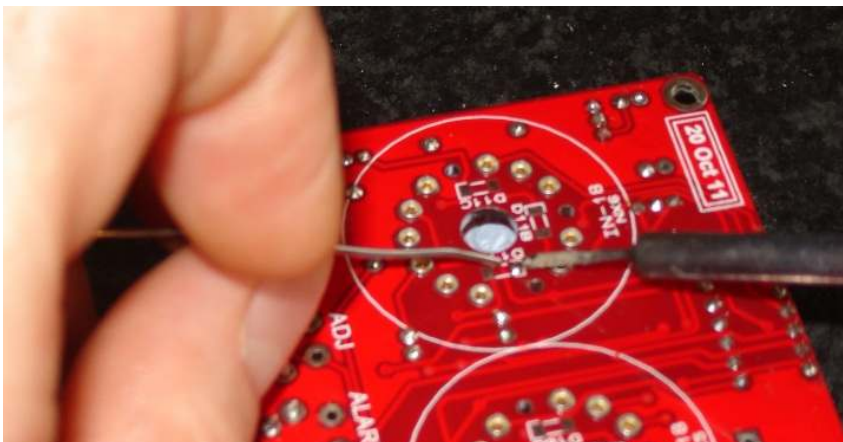
The procedure for installing the LEDs is the same for all six tube locations. First, identify the white cathode marks on the PCB as shown below:



Now identify the cathode mark on the LEDs. This is usually a green marking at one end of the LED, though it may be under the LED lens and harder to see, It may also be an arrow or a line pointing in one direction on the underside of the LED:



With a fine soldering iron tip, melt a small amount of solder onto the three cathode pads of the PCB at a single tube location:



Using tweezers, place the LED over its pads and re-apply the soldering iron briefly to the pad with the solder on. This will re-melt the solder and anchor the LED. Now solder the other pad of the LED.

Repeat this for all LEDs at each tube location, before moving to the next tube location.

6. HOW TO OPERATE THE CLOCK

The three buttons have the following functions:

SET: Exit tube test routine on cold power-up;

Show date;

Set: time, date;

Enter configuration menu;

ADJ: Call WWVB / DCF / MSF;

Adjust: time, date, alarm time, configuration parameters;

ALARM: Set alarm time; snooze; cancel snooze/alarm;

Entering configuration mode:

The principal settings of the clock are stored in flash memory – your preferred configuration is stored even after powering off the clock for extended periods.

To access the configuration mode press and hold the 'Set' button. After 2 seconds the seconds will become highlighted. Continue holding the button a further 2 seconds until the clock displays in this format:

00-XX- 99. The '99' in the seconds digits tells you that you are in the configuration menu.

In configuration mode the hours digits display the current parameter being adjusted, and the seconds digits display the current value stored against the parameter.

For each parameter, and referring to the table below, scroll through the range of possible values by pressing the 'ADJ' button. When the desired value has been reached, move on to the next parameter by pressing the 'SET' button.

When the last parameter has been set, pressing 'SET' one more time will revert the clock back to time display mode. The first parameter (0) cannot be changed as it is the software revision number. It will show for several seconds and then move to parameter 1.

In all correspondence on support issues, please quote the board type, revision date and software version.

Parameter	Description	Values
0	Software revision	10 = version 1.0, 11 = version 1.1 etc
1	12 / 24 Hr mode	0 - 12 Hr (default) 1 - 24 Hr
2	Date format	0 = MM.DD.YY (default) 1 = DD.MM.YY
3	Leading zero blanking eg. 01:54:32	0 - leading zero blanked (default) 1 - leading zero displayed
4	Night mode start hour	0 - 23
5	Night mode end hour	0 - 23
6	Night mode	0 - Tubes off 1 - Dimmed display (default)
7	Display mode	0 - standard change of digits 1 - fading digits (default)
8	Night mode override period (minutes)	0 - 50 (default 0 gives 15 seconds override) ¹
9	Snooze period	0 - 6 minutes (default) 1 - 9 minutes 2 - 12 minutes 3 - 15 minutes
10	Colon neons mode	0 - AM/PM Indication, flashing 1 - AM/PM Indication, illuminated 2 - Both flash (default) 3 - Both illuminated 4 - Both off
11	Colon neons during night dimmed mode ²	0 - AM/PM Indication, flashing 1 - AM/PM Indication, illuminated 2 - Both flash 3 - Both illuminated (default) 4 - Both off
12	Radio time signal source	0 - No Radio Time source (default) ³ 1 - DCF 2 - WWVB 3 - MSF 4 - GPS
13	GPS Baud rate	0 - 4.8 Kbps (default) 1 - 9.6 Kbps 2 - 19.2 Kbps 3 - 38.4 Kbps
14	Radio time offset hours	0-13 (default 0) ⁴
15	Radio time offset mins	0-45 (default 0) ⁴
16	Radio time offset polarity	0 - minus time (default) 1 - plus time
17	WWVB Auto DST Disable /Set DST in GPS mode	<i>WWVB Sync Mode:</i> 0 -Auto DST on WWVB Sync (default) 1 - Disable Auto DST on WWVB Sync ⁵ <i>GPS Sync Mode:</i> 0 - No DST offset 1 - 1 hour DST offset ⁶
18	Auto date display each minute	0 - Off 1 - On (default) ⁷
19	Reserved - leave as 0	0
20	Reserved - leave as 0	0

21	Reserved – leave as 0	0
22	Slots Mode ⁸	0 – Slots disabled 1 – Slots every minute 2 – Slots every 10 minutes (default) 3 – Slots every hour 4 – Slots at midnight
23	RFT Sync Mode ⁹	0 – DCF / WWVB / MSF Sync once per day only as per parameter(24) 1 – DCF / WWVB / MSF Sync every hour (default)
24	RFT Daily Sync Hour	0 – 23 (default 2)
25	RFT Seek Blanking	0 – Keep tubes lit for DCF / WWVB / MSF seek 1 – Blank tubes for DCF / WWVB / MSF seek (default)
26	LED Tube Lighting Brightness	0 - 10 (default 10)
27	LED Tube Lighting Brightness (Night Mode)	0 - 10 (default 3)
28	Restore default settings	0 – Keep user settings 1 – Restore original default settings ¹⁰

Notes:

1. Press 'SET' briefly during blanking to show time for prescribed period.
2. Night time neons mode is active when night mode is set to dim. During night time blanking the tubes AND neons are disabled.
3. Clock is fully functional without WWVB / DCF / MSF / GPS synchronisation. Set time manually.
4. Enter your time zone offset from the synchronisation source. Note that WWVB transmits UTC.
- 5: Set this to '1' to disable Auto DST adjust on WWVB Sync – eg. Arizona does not observe DST. Only active in WWVB Sync mode.
6. In GPS Sync mode, this parameter is used to set DST. Set to '1' during DST.
7. Date will be displayed each minute between 50 and 55 seconds past the minute.
8. Visual effect / cathode poisoning prevention – all digits on all tubes are cycled for 10 seconds. Not active during night blanking or dimmed modes (10 seconds).
9. DCF / WWVB /MSF synchronisation takes place on the hour. If no valid frame is received in 6 minutes, the clock reverts to normal operation.
10. Set this parameter to '1' to restore original default settings. Internal operations will then load all the original settings and restore the value to '0'

Setting the Time and Date:

From time display mode, press and hold 'SET' button for 2 seconds until the seconds digits are highlighted.

Press the 'ADJ' button to reset seconds to zero.

Briefly Press 'SET' again and the hours will be highlighted

Press the 'ADJ' button to set the minutes.

Briefly Press 'SET' again and the hours will be highlighted.

Press the 'ADJ' button to set the hours.

Proceed in this fashion to set the calendar: Year, Month and Day.

Finally, briefly Press 'SET' again to revert to normal clock operation.

Showing Date:

From time display mode, briefly press 'SET' button. Date will be shown for 5 seconds, then revert to time display.

Auto Date Display:

Setting parameter (18) to '1' will enable auto display of date between 50 and 55 seconds past each minute.

Night Blanking Override:

During programmed night blanking, the blanking may be overridden to see the time by briefly pressing the 'SET' button. Tubes will remain lit for the period defined in parameter (8).

Manual RFT Call:

In DCF / WWVB / MSF modes, pressing 'ADJ' briefly during time display will initiate a manual time seek for maximum 6 minutes, or until a valid time frame is received.

Setting Alarm:

Press the 'ALARM' Button. The seconds digits show the on / off status of the alarm: 00 or 01 (off or on).

Set on / off status, then minutes followed by hours by using the 'ALARM' and 'ADJ' buttons. When set, the alarm LED will also light.

Canceling Alarm:

Press 'ALARM' briefly to cancel alarm and enter snooze mode, or a longer press until the clock beeps, to cancel snooze. Alarm remains set for the next day.

7. PIC CONTROLLER SECURITY CODE

To add extra security to the product in shipment, and to help protect code security a security code lock feature is built into the PIC Controller. This helps to ensure that the product can only be used by the intended recipient who purchased the product either direct or from an authorised distributor or reseller.

During the first 45 days of product use, the clock may stop displaying the time and display a 6 digit security code. This is a self-generated true random number. If your clock displays the security code, please write down the number carefully, switch off power to the clock and contact the seller of your clock for the unlock code and unlock procedure.

Do not attempt to unlock or change any settings yourself, as doing so will more than likely make the PIC permanently unusable.

8. USING A RADIO FREQUENCY TIME RECEIVER OR GPS RECEIVER

The clock can automatically synchronise time from DCF (Europe), WWVB (USA), and MSF (UK) long wave time transmitters.

The clock can also receive time from a GPS receiver that transmits information using NMEA-0183 protocol, using the \$GPRMC sentence.

8.1 Configuring for RFT or GPS Synchronisation.

- Set parameter 12:
 - 1: DCF
 - 2: WWVB
 - 3: MSF
 - 4: GPS
- If using GPS, set the baud rate in parameter (13)
- Set parameters 14 and 15 for the hours and minutes your time zone is offset from the synchronisation source. This is usually only whole hours. Examples:
 - Eastern USA is 5 hours offset from UTC transmitted by the WWVB transmitter.
 - UK is 1 hour offset from the time transmitted by the DCF transmitter
 - France has no offset from the time transmitted by the DCF transmitter
- Set parameter (16) to identify whether the offset is minus (0) or positive (1) of the time source.
- If using WWVB source, and you do NOT require automatic DST adjustment (eg. Arizona does not observe DST), then set parameter (17) to 1.
- If using GPS, parameter (17) acts as a DST bit. Set to 1 during DST period, and 0 during standard time period.
- Set parameter (23) to select between hourly seek and daily seek in DCF / WWVB / MSF modes.
- If you have selected daily seek, use parameter (24) to set the time of the daily seek in DCF / WWVB / MSF modes.
- If you intend to place the RFT receiver module closer to the clock PCB than 6 ft / 2 metres, the clock will need to disable HV and switch off the tubes for time seek, otherwise the switch-mode power supply will prevent reception. Select blanking during time seek by setting parameter (25) to 1. Leave as 0 to keep tubes lit during time seek.

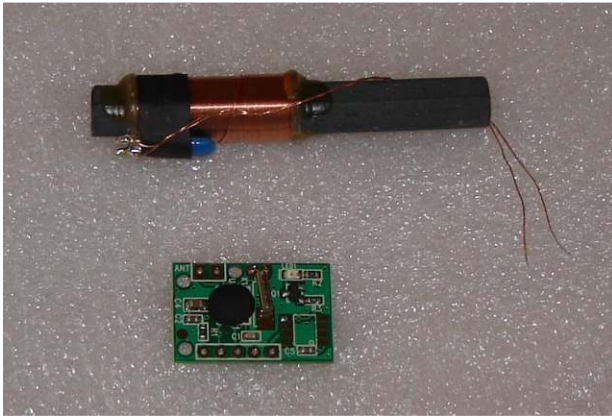
8.2 DCF / WWVB / MSF Synchronisation.

An optional receiver and 3 metre cable is available. The Radio Frequency Time (RFT) receiver module plugs into the mini-DIN socket on the rear of the PCB.

8.3 Connecting the DCF / WWVB / MSF receiver.

The clock is designed to be used with Symtrik RFT time receiver module type SYM-RFT-xx

These modules feature an on-board indicator LED to indicate the regular pulses from the time transmitter. This is very useful in setting up the module, to determine if a good signal has been found. The module's output coded time information in inverted format and this is the format the clock can decode.



If you are using our module and 3 metre extension cable, proceed to step 8.4. If you are wiring in the module close to the main clock PCB or by direct soldering to the clock PCB pads, refer to step 8.5.

Some Notes on WWVB / DCF / MSF Reception:

Many other electrical appliances such as TVs and Mobile phones reception when in close proximity. Metal objects cause reception problems too. It is suggested to start off with the antenna by a window, in the approximate direction of the signal Do not point the antenna at the direction of the signal, but have the antenna side-on to the signal direction.

Once a good signal has been obtained, try different locations, and progressively further from the window.

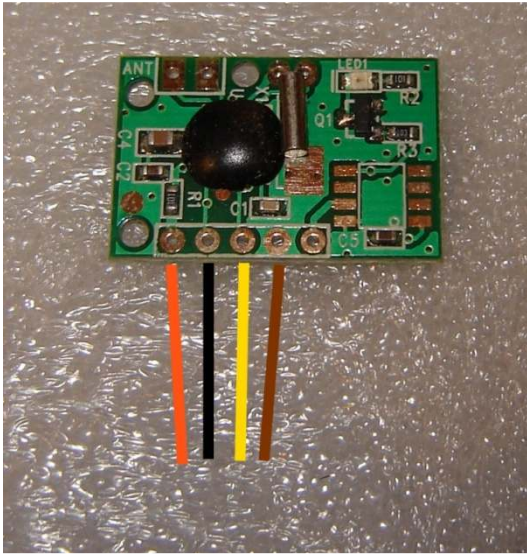
Place and design your case so the antenna is as far away from the PCB as possible.

8.4 Making up the RFT Module and cable.

Make connections to the RFT module as follows:

First, strip approx 15mm / 0.6" of the other grey sheath of the cable. Identify the Black, Orange, Yellow and Brown cables and clip off all the rest as they are not required.

Now connect the cables to the module as shown below. It is not necessary to feed the cables into the holes – it is sufficient to lay the cables over the PCB pads and solder on.



Now attach the antenna by soldering the two antenna wires to the pads marked 'ANT':

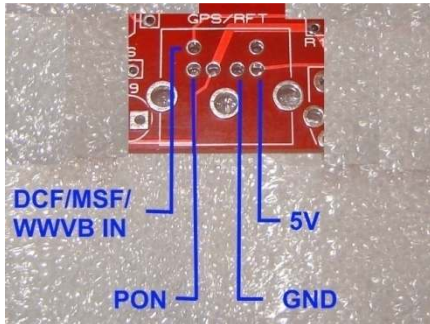


The RFT Module is now ready to connect and use with the clock.

8.5 Mini-DIN Connector and PCB pinout.

This information is needed if you are connecting a DCF / WWVB / MSF receiver to the clock PCB directly, or without using our mini-DIN extension cable. The following connections are required for connecting a DCF / WWVB / MSF receiver module:

Bare PCB and DIN Socket connections:



Module connections:



Note that one pad is not connected (NC).

There are no special requirements for the cable used: light duty 4-way signal cable is suitable for making the connections.

8.6 Connecting a GPS receiver

The clock has been designed for, and tested with a Globalsat BR-355 GPS receiver (available separately from PV Electronics).



It may be possible to connect other GPS receivers with the following specification:

Power consumption max 50mA

Supply voltage 5V

Output signal levels: RS232 or TTL

Serial baud rate: 4,800 bps, 9,600 bps, 19,400 bps or 38,400 bps

Output protocol: NMEA-0183, including \$GPRMC sentence

The Globalsat BR-355 receiver plugs directly into the mini-DIN connector on the rear of the clock PCB.

8.7 Function of the GPS / RFT indicator LED (D9):

- *No Radio Synchronisation source installed (parameter (12) = 0)*
LED is permanently off
- *RFT or GPS Synchronisation enabled (parameter (12) = 1-4)*
The LED will be ON if the clock has synchronised in the last two hours; slowly flashing if the last synchronisation was between 2 hours and 24 hours ago; and off if the last synchronisation is older than 24 hours.
- Whilst seeking DCF, WWVB or MSF the LED will flash very briefly once per second. Additionally, the indicator will flash rapidly whilst the clock is actually receiving and processing a valid time frame.

The function of the RFT indicator LED may be summarised in the table below:

Radio Time Source	Seeking DCF / WWVB / MSF Frame	Aquiring DCF / WWVB / MSF Frame	Sync < 2 Hrs	Sync >2 Hrs Sync < 24 Hrs	Sync > 24 Hrs
None	-	-	Off	Off	Off
DCF / WWVB / MSF	Brief flash each second	Fast Flash	On	Slow Flash	Off
GPS	-	-	On	Slow Flash	Off

