

# Assembly Instructions And User Guide

## Nixie Clock Type 'Large Tube Clock'



## REVISION HISTORY

<b>Issue Number</b>	<b>Date</b>	<b>Reason for Issue</b>
5	25 October 2013	Alternative LED and neon mounting instructions for Stainless Steel case
4	1 July 2012	New PCB 14 JUN 12
3	20 November 2011	Various
2	10 November 2011	Errors corrected - R21-R26 value
1	1 November 2011	New document

# 1. INTRODUCTION

## 1.1 About the clock

Nixie clock type 'LTC18' is a compact design with all components and tubes mounted on a single PCB. The efficient use of board space is achieved by using a multiplex design to drive the display tubes. Two high-voltage binary-to-decimal decoder ICs (K155ID1) are required, driving the six tubes in groups of three.

## 1.2 Clock Features

Nixie clock type 'LTC' has the following features:

- Hours, Minutes and Seconds display
- 12 or 24 hour modes
- Date display in either DD.MM.YY or MM.DD.YY format
- Alarm, with programmable snooze period
- Programmable date display each minute
- Attractive LED tube lighting
- Uses a Quartz Crystal Oscillator as the timebase
- Optional DCF / MSF / GPS synchronisation with status indicator LED
- Supercapacitor backup. Keeps time during short power outages
- Simple time setting using two buttons
- Programmable leading zero blanking
- Five programmable neon colon settings (Flashing AM/PM indication, illuminated AM/PM indication, both flashing, both on, both off)
- Maintains time during setup mode, eg. When changing between Standard Time and Daylight Savings Time
- Seconds can be reset to zero to precisely the set time
- Programmable night mode - blanked or dimmed display to save tubes or prevent sleep disturbance
- Separate modes for colon neons during night mode
- Standard or fading change of digits
- 'Slot Machine' Cathode poisoning prevention routine
- All user preferences stored to non-volatile memory

### 1.3 SAFETY

**DANGER:** The clock pcb includes a switched-mode voltage booster circuit. This generates nominally 170 Volts DC, but is capable of generating up to 300 Volts before adjustment. Assembly may only be undertaken by individuals who are suitably qualified and experienced in electronics assembly, and are familiar with safe procedures for working with high voltages. If in doubt, refer to a suitably qualified engineer before proceeding.

**The voltages generated by this circuit can give a potentially LETHAL ELECTRIC SHOCK.**

DISCLAIMER: This product is supplied as a kit of parts, intended only for suitably qualified electronic engineers, who are suitably qualified and experienced in electronics assembly, and are familiar with safe procedures for working with high voltages. The supplier, his agents or associates accept no liability for any damage, injury or death arising from the use of this kit of parts.

This is not a finished product, and the person assembling the kit is responsible for ensuring that the finished product complies with any applicable local regulations governing electrical equipment, eg. UL, CE, VDE.

## 2. TOOLS AND EQUIPMENT REQUIRED

### 2.1 Tools required to assemble the PCB.

The following tools will be required to assemble the PCB:

- Soldering iron with a small tip (1-2 mm)
- Wire cutters (TIP: A small pair of nail clippers works very well for this function)
- Wire strippers (TIP: A small pair of scissors is quite suitable)
- Multimeter for voltage tests and for identifying the resistors.
- Small flat screwdriver for adjusting the high voltage supply

### 2.2 Materials you will need.

Solder – lead / tin solder is preferred. Lead free solder, as now required to be used in commercial products in Europe, has a much higher melting point and can be very hard to work with.

Desoldering wick (braid) can be useful if you accidentally create solder bridges between adjacent solder joints.

### 2.3 Other items you will need.

The clock kit does not include a power adapter. This is because the kit is sold to many countries around the world, each with very different household mains outlet socket types. If you are using a DCF or MSF receiver avoid switching power type supplies, as they can cause interference problems.

The type of power adapter can be obtained at very low cost. The following type of adapter should be obtained and used with the kit:

Output 12V DC

Minimum power output capability of 500 mA

Output plug: 2.1mm pin, centre positive.

A suitable adapter is shown below:



### 3. LIST OF COMPONENTS

#### 3.1 Table of components

Circuit Designation	Part Description
<b>Resistors</b>	
R1	560Ω, ¼ Watt
R2	560Ω, ¼ Watt
R3	Not installed
R4	620KΩ, ¼ Watt
R5	4.3KΩ, ¼ Watt
R6, R7	560Ω, ¼ Watt
R8, R9	4.3KΩ, ¼ Watt
R10, R11	Not installed
R12 - R14	4.3KΩ, ¼ Watt
R15 - R17	390KΩ, ¼ Watt
R18 - R20	Not installed
R21 - R26	2.7KΩ, ¼ Watt
R27, R28	4.3KΩ, ¼ Watt
R29, R30	390KΩ, ¼ Watt
R37	Not installed
R38, R39	560Ω, ¼ Watt
<b>Capacitors</b>	
C1	470μF, 16-25V, Electrolytic
C2	100 nF Ceramic
C3	330pF Ceramic
C4	100nF Ceramic
C5	470 μF, 16-25V, Low ESR
C6	Not installed
C7	100nF Ceramic
C8	1 μF, 250V, Electrolytic
C9	0.1F
C10	100nF Ceramic
C11, C12	33pF Ceramic
C13	100nF Ceramic
<b>Transistors</b>	
Q1	BC639
Q2	BC640
Q3	IRFxxx MOSFET
Q4	Not installed
Q5 - Q7	MPSA42
Q8 - Q10	MPSA92
Q11 - Q13	MPSA42
<b>Diodes</b>	
D1, D2	1N5819
D3	UF4004
D4	5mm Green LED
D5	5mm Yellow LED
<b>Integrated Circuits</b>	
IC1	7805 5V Voltage regulator
IC2	MC34063A

IC3	PIC16F193x 8-bit Microcontroller
IC3, IC4	74141 / K155ID1 Nixie driver
Miscellaneous	
L1	100 $\mu$ H Axial inductor
NE1, NE2	6mm Wire ended neon lamp
SW1, SW2, SW3	Miniature push button
VR1	1K Potentiometer
IC Sockets	8 Way DIP IC socket for IC2 28 Way DIP IC socket for IC3 2 X 16 Way DIP IC sockets for IC4, IC5
J1	2.1mm PCB Power socket
J2, J3	0.1" pitch 2 -way socket
GPS / RFT	3.5mm Jack Socket
LS1	Piezo sounder
FUSE	500mA Resettable fuse
Insulation	Clear insulation for neons
X1	32.768KHz Watch crystal
Socket receptacles	66 X 1mm Socket receptacles

#### Lighting Pack:

The optional pack contains the extra components needed for the tube underlighting:

Circuit Designation	Part Description
R31 - R36	270 $\Omega$ , ¼ Watt
D6a - D11c	1206 SMD LEDs (18 total + 2 spare) Blue, Yellow, Green or Pink
Q14	2N7000 MOSFET

The resistors used in the kit are 1% tolerance metal film. They are marked with 4 coloured bands to identify the value. However it is sometimes unclear in which direction the bands should be read. Therefore, we recommend that the resistors be identified with a multimeter.

### 3.2 Parts list / Packing sheet

Part Description	Quantity
<b>Resistors</b>	
560Ω, ¼ Watt	6
4.3KΩ, ¼ Watt	8
2.7KΩ, ¼ Watt	6
390KΩ, ¼ Watt	5
620KΩ, ¼ Watt	1
<b>Capacitors</b>	
470µF, 16-25V, Electrolytic	2
1µF, 250V, Electrolytic	1
100nF, Ceramic	5
33pF, Ceramic	2
0.1F	1
330pF, Ceramic	1
<b>Transistors</b>	
IRFxxx MOSFET	1
BC639	1
BC640	1
MPSA42	6
MPSA92	3
<b>Diodes</b>	
1N5819	2
UF4004 Fast recovery diode	1
5mm Green LED	1
5mm Orange LED	1
<b>Integrated Circuits</b>	
7805 5V Voltage regulator	1
MC34063A	1
PIC16Fxxxx 8-bit Microcontroller	1
74141 / K155ID1 Nixie driver	2
<b>Miscellaneous</b>	
100 µH Axial inductor	1
6mm Wire ended neon lamp	2
Miniature push button	3
1K Potentiometer	1
8 Way DIP IC Socket	1
28 Way DIP IC Socket	1
16 Way DIP IC Socket	2
2.1mm PCB Power socket	1
0.1" pitch 2 -way socket	2
3.5mm Jack socket	1
Piezo sounder	1
500mA Resettable fuse	1
6 cm Clear insulation	1
32.768KHz watch crystal	1
1mm Socket receptacles	66



### Lighting Pack:

The optional pack contains the extra components needed for the tube underlighting:

270 $\Omega$ , 1/4 Watt resistor	6
1206 SMD Resistors Blue, Yellow, Green or Pink	20
2N7000 MOSFET	1

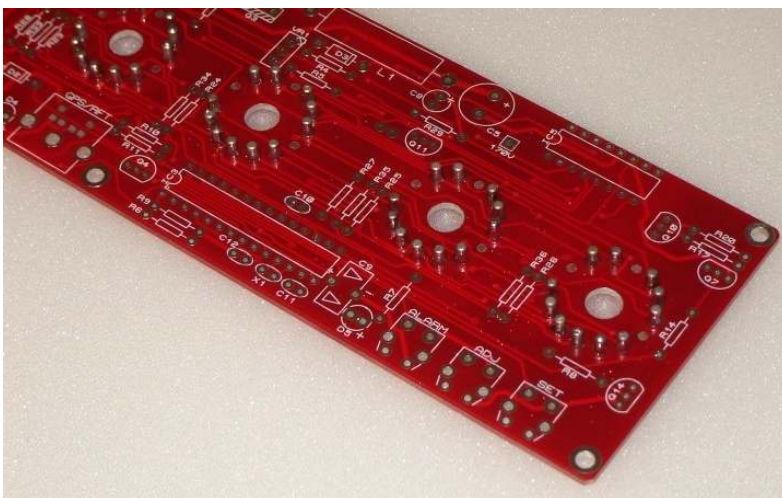
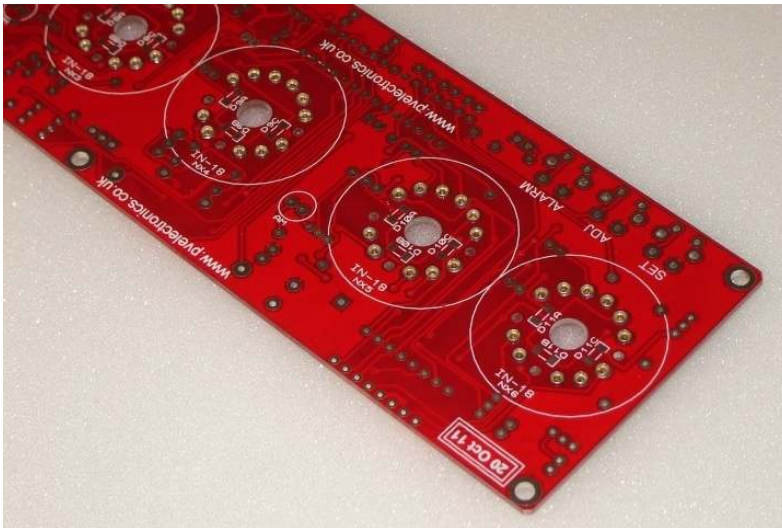
It is recommended that the kit is checked against the lists above, to ensure all parts are present before commencing assembly. Don't be alarmed if there are some extra components, as some component bags are shared between different kit types. Also check our kit updates document on our website downloads page. This details any changes to components, or substitutions that have been made due to part availability.

## 4. ASSEMBLY OF THE PCB

**NOTE THAT THESE INSTRUCTIONS ARE SHARED BETWEEN SEVERAL VERY SIMILAR CLOCK TYPES. YOUR PCB MAY NOT LOOK EXACTLY LIKE THE ONE PICTURED.**

### 4.1 1mm Sockets For Nixie Tubes

There are 66 individual sockets that need to be soldered in. The best method is as follows. Place all sockets into the holes, noting that for each tube there are three holes that have no socket as marked on the PCB. When all sockets have been placed, place a flat and hard object over the top of the sockets, and turn the PCB over so you can solder from the underside. Be sure to insert the sockets FROM the bottom side of the PCB – the side with the tube and markings.



## 4.2 Low Voltage Power components:

**J1, FUSE**

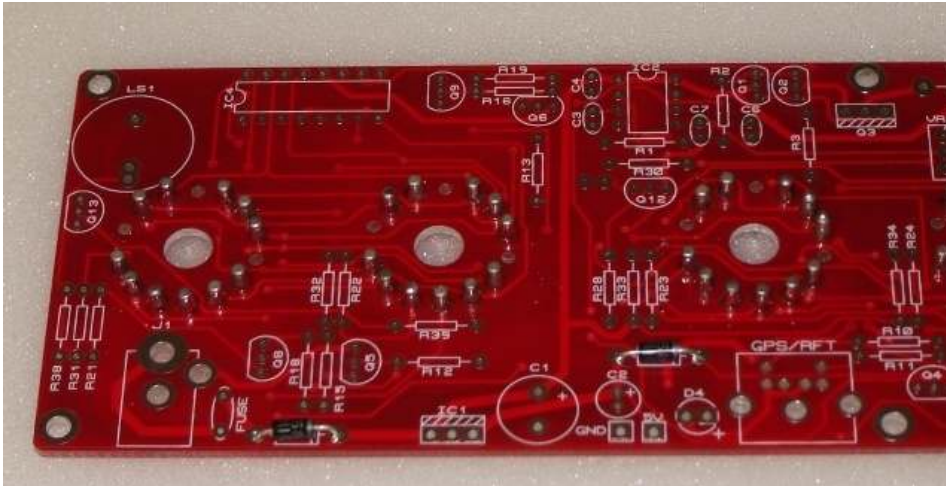
**D1, D2 - 1N5819**

**IC1 - 7805**

**C1 - 470 $\mu$ F**

**C2 - 100 nF**

Start by installing D1 and D2. Align the white band on the components with the band marked on the PCB.



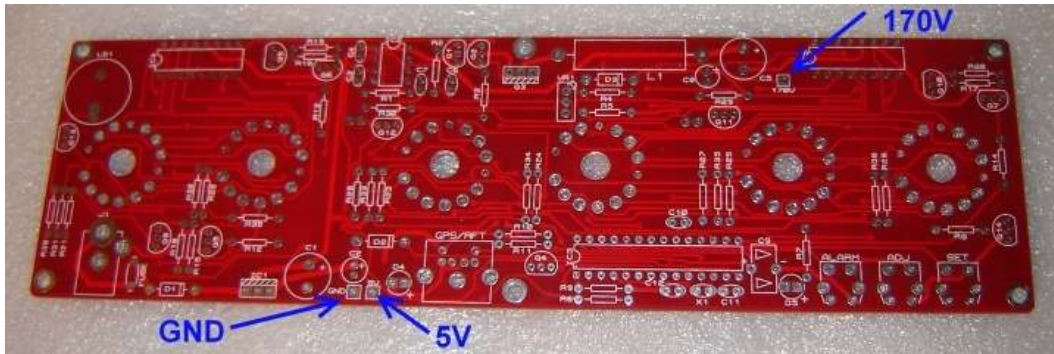
Proceed to mount the other components of this step. Capacitor C1 is polarised: the longer lead goes in the hole marked '+'. C2 is not polarised. Keep IC1 mounted vertical for the moment. It can be bent over to lower the profile of the board at the end of assembly.

The PCB should now look like the picture below:



## 4.2 Testing Stage 1 Power Components.

Identify the test GND, 5V and 170V test points as shown below.



Plug in the power supply, and then test using a DC voltmeter: Touch the black probe on the GND test point and the red probe on the 5V test point. The voltage should measure between 4.9 and 5.1 Volts. If not, disconnect power and check your work. Do not proceed with the assembly until the error is corrected. Once the test is completed, disconnect the power.

## 4.3 High Voltage Generator components.

**Socket for IC2**  
**R1, R2 - 560 $\Omega$**   
**R4 - 620K $\Omega$**   
**R5 - 4.3K $\Omega$**





- 4.4** Q1 - BC639  
 Q2 - BC640  
 C3 - 330pF  
 C4 - 100nF  
 C7 - 100nF

C3 is shown blue on the picture, but may also be cream or brown colour



Note, that C7 is mounted on the TUBE side of the PCB, directly across pins 4 and 5 of IC2:



- 4.5** Q3 - IRFxxx  
 D3 - UF4004  
 L1 - Inductor  
 C5 - 470µF  
 C8 - 1µF  
 VR1 - 1K Pot

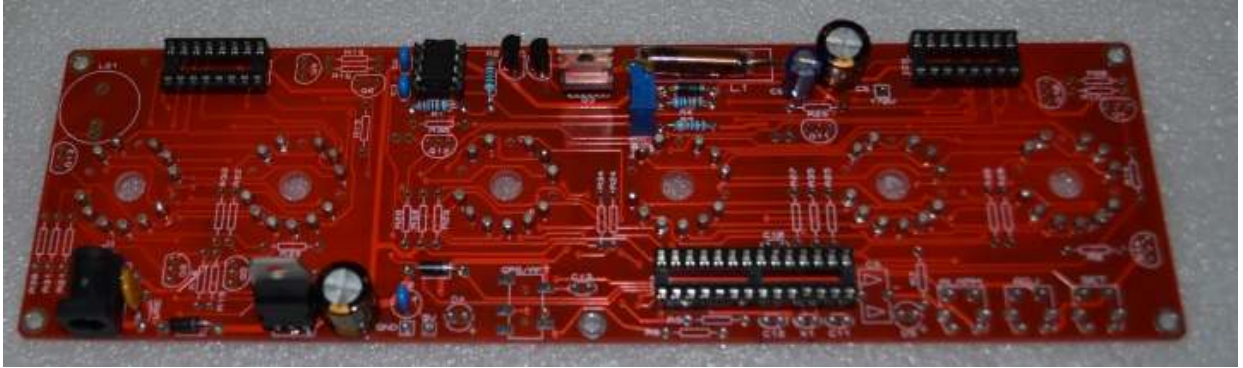


#### **4.6 High Voltage Generator Test**

- Refer to the warnings on page 4.
- Insert IC2 into then socket, making sure it is correctly oriented.
- Power up the PCB, and using the GND and 170V test points, measure the high voltage generated. It should be initially between 150 and 190V. -
- Using the VR1 brass screw, slowly adjust the screw until the voltage is between 168 and 172V. Disconnect the power supply.

#### 4.7 Sockets for IC3, IC4, IC5

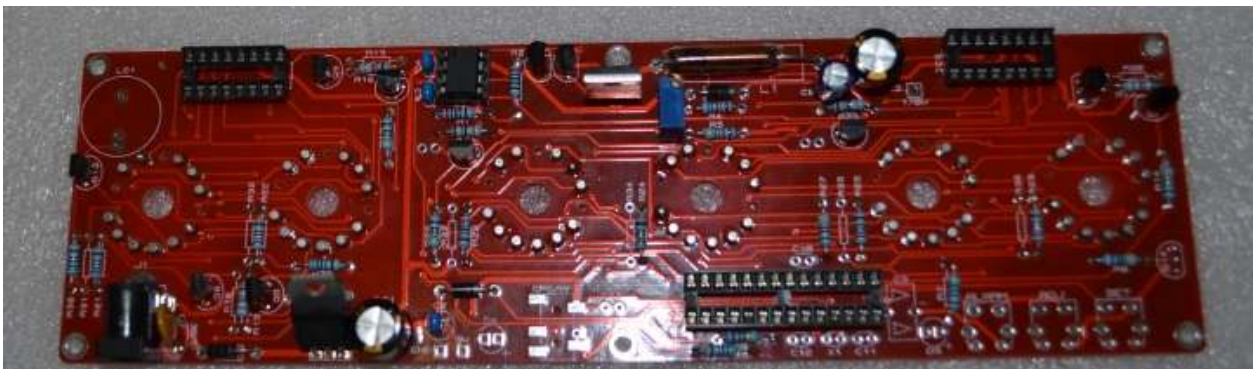
Align the notch on the body of each socket with the corresponding mark on the PCB



- 4.8 R6, R7, R38, R39 (all 560 $\Omega$ )  
R8, R9, R12, R13, R14, R27, R28(all 4.3K $\Omega$ )  
R21 - R26 (all 2.7K $\Omega$ )  
R15, R16, R17, R29, R30 (all 390 K $\Omega$ )



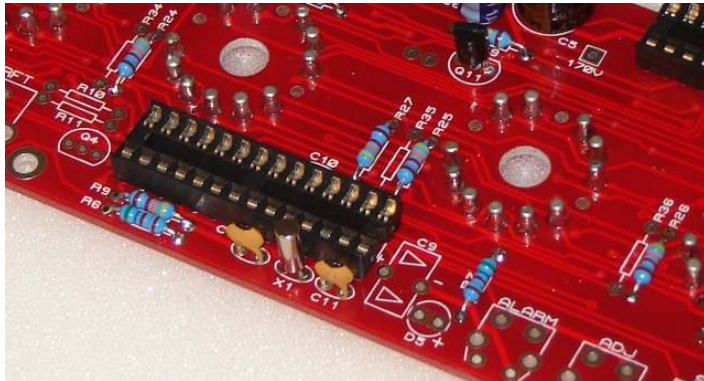
- 4.9 Q5, Q6, Q7, Q11, Q12, Q13 (all MPA42)  
Q8, Q9, Q10 (all MPSA92)





#### 4.10 X1 - 32.768 KHz Crystal C11, C12 (33 pF)

These are the timekeeping components: 32.768KHz crystal and two load capacitors. See below:



#### 4.11 Tube Test

At this stage, it is desirable and possible to test that the tube drivers and micro-controller are functioning correctly. Making the test at this point, before the remaining components are installed will make troubleshooting and diagnosis simpler if there is a problem.

Insert IC3 (PIC16F193x) and IC4, IC5 (both K155ID1) into their sockets. Be very careful to align the notch on the IC body with corresponding PCB markings.

Then insert 6 X IN-18 Nixie tubes into the sockets.

Now power up the PCB, and the tubes should proceed to all count in synchronisation from 0 to 9 repeatedly. If this does not happen, stop and check your work carefully before proceeding.



#### 4.12 GPS / RFT Connector

**LS1 - Piezo sounder**

**Set, Adj, Alarm Buttons**

**C9 - 0.1 $\mu$ F Supercapacitor**

**C10, C13 - 100nF**

Note that if you won't be using a Radio Time Receiver Module, then you can omit the GPS / RFT Connector, C13 and LED D4.

C9 is a polarised component. The arrows on the component body should match the arrows on the PCB marking.

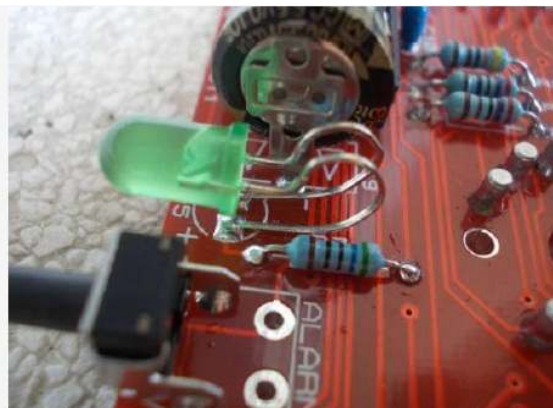
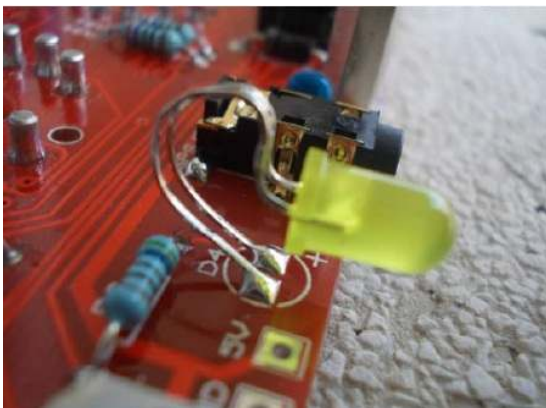
#### 4.13 D4 - Green GPS / RFT LED

**D5 - Yellow Alarm LED**

If you will be using our Plexiglass (acrylic) case, or designing your own case, please proceed to install these LEDs as shown in the picture below. The longer lead of each LED goes in the hole marked '+'.  
The longer lead of each LED goes in the hole marked '+'.

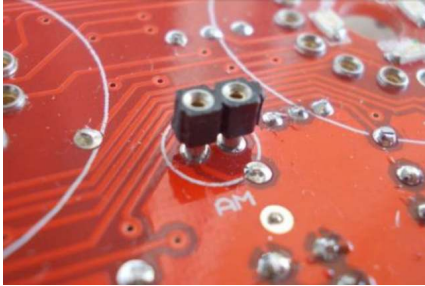


Alternatively, for customers using our Stainless Steel case, please form the leads of the LEDs as shown below and solder over the pads as shown below. Ensure the longer lead is soldered to the '+' pad.



#### 4.14 Sockets J2, J3 for AM, PM Colon Neon Lamps

The sockets may be supplied as a strip of 4 sockets. If so, break the strip cleanly with the help of a pair of pliers and install as shown below:



The leads of the neon lamps may be trimmed so the neons sit at a suitable height to your preference. Also cut some of the clear insulation to prevent the leads touching each other.

It is a good idea to leave trimming and inserting the neons until the very end, when your clock is mounted in its final case.

## 5. OPTIONAL COMPONENTS

### 5.1 Tube Underlighting Pack

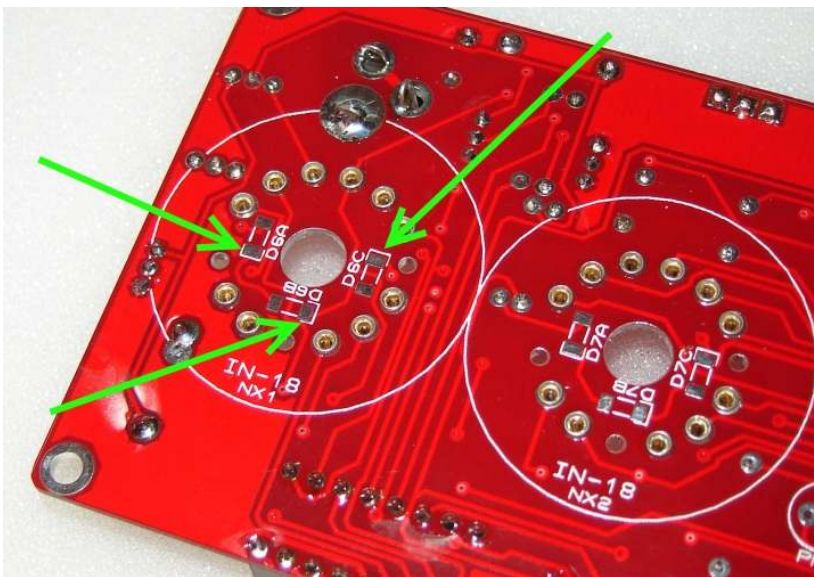
**Q14 - 2N7000**

**R31 - R36 (all 270Ω)**

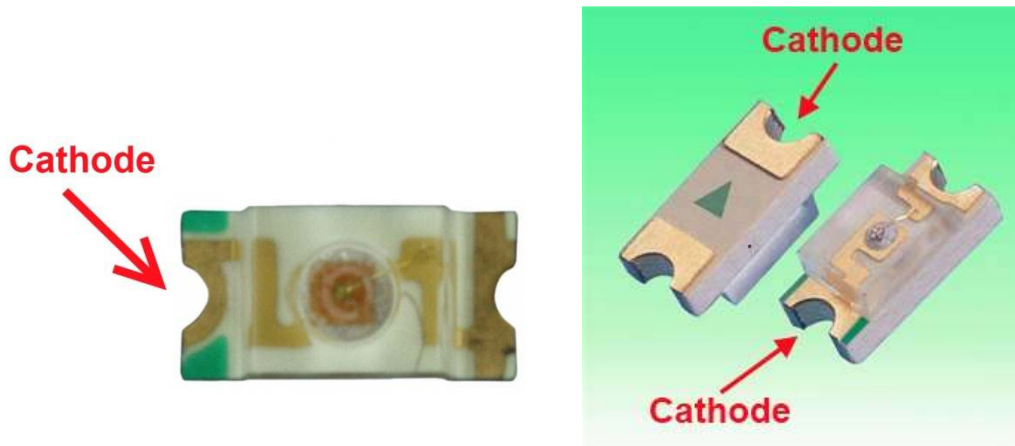
**D6A - D11C (18 X 1206 size SMD LEDs)**

Three 1206 LEDs per tube provide attractive tube underlighting. Start by installing Q14 and the six 270R resistors.

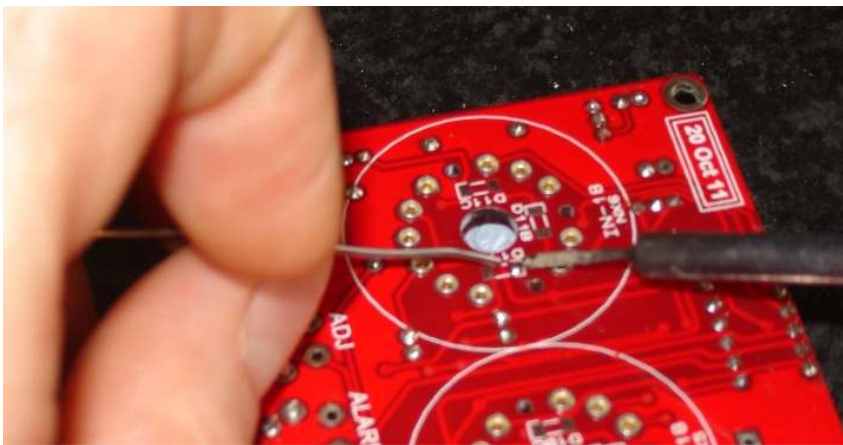
The procedure for installing the LEDs is the same for all six tube locations. First, identify the white cathode marks on the PCB as shown below:



Now identify the cathode mark on the LEDs. This is usually a green marking at one end of the LED, though it may be under the LED lens and harder to see, It may also be an arrow or a line pointing in one direction on the underside of the LED:



With a fine soldering iron tip, melt a small amount of solder onto the three cathode pads of the PCB at a single tube location:



Using tweezers, place the LED over its pads and re-apply the soldering iron briefly to the pad with the solder on. This will re-melt the solder and anchor the LED. Now solder the other pad of the LED.

Repeat this for all LEDs at each tube location, before moving to the next tube location.

## 6. HOW TO OPERATE THE CLOCK

The three buttons have the following functions:

SET: Exit tube test routine on cold power-up;

    Show date;

    Set time, set date;

    Enter configuration menu;

ADJ: Call DCF / MSF;

    Adjust: time, date, alarm time, configuration parameters;

ALARM: Set alarm time; snooze; cancel snooze/alarm;

### *Entering configuration mode:*

The principal settings of the clock are stored in flash memory – your preferred configuration is stored even after powering off the clock for extended periods. To access the configuration mode press and hold the 'SET' button. After 2 seconds the seconds will become highlighted. Continue holding the button a further 2 seconds until the clock displays in this format:

00-XX-99. The '99' in the seconds digits tells you that you are in the configuration menu.

In configuration mode the hours digits display the current parameter being adjusted, and the minutes digits display the current value stored against the parameter.

For each parameter, and referring to the table below, scroll through the range of possible values by pressing the 'ADJ' button. When the desired value has been reached, move on to the next parameter by pressing the 'SET' button. When the last parameter has been set, pressing 'SET' one more time will revert the clock back to time display mode. The first parameter (0) cannot be changed as it is the software revision number. It will show for several seconds and then move to parameter 1.

In all correspondence on support issues, please quote the board type, revision date and software version.

Parameter	Description	Values
0	Software revision	10 = version 1.0, 11 = version 1.1 etc
1	12 / 24 Hr mode	0 - 12 Hr (default) 1 - 24 Hr
2	Date format	0 = MM.DD.YY (default) 1 = DD.MM.YY
3	Leading zero blanking eg. 01:54:32	0 - leading zero blanked (default) 1 - leading zero displayed
4	Night mode start hour	0 - 23
5	Night mode end hour	0 - 23
6	Night mode	0 - Tubes off 1 - Dimmed display (default)
7	Display mode	0 - Standard change of digits 1 - Cross - fading digits 2 - Cross - fading digits with scrollback (default)
8	Night mode override period (minutes)	0 - 50 (default 0 gives 15 seconds override) <sup>1</sup>
9	Snooze period	0 - 6 minutes (default) 1 - 9 minutes 2 - 12 minutes 3 - 15 minutes
10	Colon neons mode	0 - AM/PM Indication, flashing 1 - AM/PM Indication, illuminated 2 - Both flash (default) 3 - Both illuminated 4 - Both off
11	Colon neons during night dimmed mode <sup>2</sup>	0 - AM/PM Indication, flashing 1 - AM/PM Indication, illuminated 2 - Both flash 3 - Both illuminated (default) 4 - Both off
12	Radio time signal source	0 - No Radio Time source (default) <sup>3</sup> 1 - DCF 2 - Reserved 3 - MSF 4 - GPS
13	GPS Baud rate	0 - 4.8 Kbps (default) 1 - 9.6 Kbps 2 - 19.2 Kbps 3 - 38.4 Kbps
14	Radio time offset hours	0-13 (default 0) <sup>4</sup>
15	Radio time offset mins	0-45 (default 0) <sup>4</sup>
16	Radio time offset polarity	0 - minus time (default) 1 - plus time
17	Set DST in GPS mode	0 - No DST offset 1 - 1 hour DST offset <sup>5</sup>
18	Auto date display each minute	0 - Off 1 - On (default) <sup>6</sup>
19	Reserved - leave as 0	0
20	Time Calibration Factor	0 - 99 (each unit adjusts by 0.2s per day)
21	Time Calibration Polarity	0 - Make clock slower 1 - Make clock faster



22	Slots Mode <sup>7</sup>	0 - Slots disabled 1 - Slots every minute 2 - Slots every 10 minutes (default) 3 - Slots every hour 4 - Slots at midnight
23	RFT Sync Mode <sup>8</sup>	0 - DCF / MSF Sync once per day only as per parameter(24) 1 - DCF / MSF Sync every hour (default)
24	RFT Daily Sync Hour	0 - 23 (default 2)
25	RFT Seek Blanking	0 - Keep tubes lit for DCF / MSF seek 1 - Blank tubes for DCF / MSF seek (default)
26	LED Tube Lighting Brightness	0 - 10 (default 10)
27	LED Tube Lighting Brightness (Night Mode)	0 - 10 (default 3)
28	Restore default settings	0 - Keep user settings 1 - Restore original default settings <sup>9</sup>

*Notes:*

1. Press 'SET' briefly during blanking to show time for prescribed period.
2. Night time neons mode is active when night mode is set to dim. During night time blanking the tubes AND neons are disabled.
3. Clock is fully functional without DCF / MSF / GPS synchronisation. Set time manually.
4. Enter your time zone offset from the synchronisation source.
5. In GPS Sync mode, this parameter is used to set DST. Set to '1' during DST.
6. Date will be displayed each minute between 50 and 55 seconds past the minute.
7. Visual effect / cathode poisoning prevention - all digits on all tubes are cycled for 10 seconds. Not active during night blanking or dimmed modes (10 seconds).
8. DCF /MSF synchronisation takes place on the hour. If no valid frame is received in 6 minutes, the clock reverts to normal operation.
9. Set this parameter to '1' to restore original default settings. Internal operations will then load all the original settings and restore the value to '0'

**Setting the Time and Date:**

From time display mode, press and hold 'SET' button for 2 seconds until the seconds digits are highlighted.

Press the 'ADJ' button to reset seconds to zero.

Briefly Press 'SET' again and the hours will be highlighted

Press the 'ADJ' button to set the minutes.

Briefly Press 'SET' again and the hours will be highlighted.

Press the 'ADJ' button to set the hours.

Proceed in this fashion to set the calendar: Year, Month and Day.

Finally, briefly Press 'SET' again to revert to normal clock operation.

**Showing Date:**

From time display mode, briefly press 'SET' button. Date will be shown for 5 seconds, then revert to time display.

**Auto Date Display:**

Setting parameter (18) to '1' will enable auto display of date between 50 and 55 seconds past each minute.

**Night Blanking Override:**

During programmed night blanking, the blanking may be overridden to see the time by briefly pressing the 'SET' button. Tubes will remain lit for the period defined in parameter (8).

**Manual RFT Call:**

In DCF / MSF modes, pressing 'ADJ' briefly during time display will initiate a manual time seek for maximum 6 minutes, or until a valid time frame is received.

**Setting Alarm:**

Press the 'ALARM' Button. The seconds digits show the on / off status of the alarm: 00 or 01 (off or on).

Set on / off status, then minutes followed by hours by using the 'ALARM' and 'ADJ' buttons. When set, the alarm LED will also light.

**Cancelling Alarm:**

Press 'ALARM' briefly to cancel alarm and enter snooze mode, or a longer press until the clock beeps, to cancel snooze. Alarm remains set for the next day.



## 7. USING A RADIO FREQUENCY TIME RECEIVER OR GPS RECEIVER

The clock can automatically synchronise time from DCF (Europe) and MSF (UK) long wave time transmitters.

The clock can also receive time from a GPS receiver that transmits information using NMEA-0183 protocol, using the \$GPRMC sentence.

### 7.1 Configuring for RFT or GPS Synchronisation.

- Set parameter 12:
  - 1: DCF
  - 2: not used
  - 3: MSF
  - 4: GPS
- If using GPS, set the baud rate in parameter (13). Our GPS Time Receiver supplied from June 2013 uses 9,600 bps baud rate.
- Set parameters 14 and 15 for the hours and minutes your time zone is offset from the synchronisation source. This is usually only whole hours. Examples:
  - UK is 1 hour offset from the time transmitted by the DCF transmitter
  - France has no offset from the time transmitted by the DCF transmitter
- Set parameter (16) to identify whether the offset is minus (0) or positive (1) of the time source.
- If using GPS, parameter (17) acts as a DST bit. Set to 1 during DST period, and 0 during standard time period.
- Set parameter (23) to select between hourly seek and daily seek in DCF / MSF modes.
- If you have selected daily seek, use parameter (24) to set the time of the daily seek in DCF / MSF modes.
- If you intend to place the RFT receiver module closer to the clock PCB than 6 ft / 2 metres, the clock will need to disable HV and switch off the tubes for time seek, otherwise the switch-mode power supply will prevent reception. Select blanking during time seek by setting parameter (25) to 1. Leave as 0 to keep tubes lit during time seek.

## **7.2 DCF / MSF Synchronisation.**

An optional receiver and cable is available. The Radio Frequency Time (RFT) receiver module plugs into the 3.5mm jack socket on the rear of the PCB.

## **7.3 Connecting the DCF /MSF receiver.**

Please contact us at [sales@pvelectronics.co.uk](mailto:sales@pvelectronics.co.uk) for more information on the compatible DCF and MSF time receivers.

### *Some Notes on DCF / MSF Reception:*

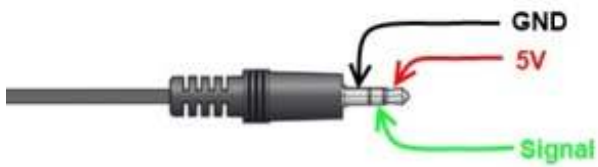
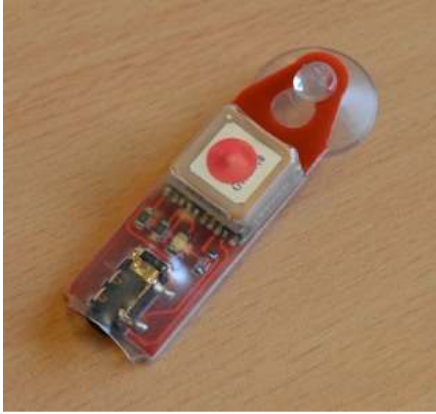
Many other electrical appliances such as TVs and Mobile phones reception when in close proximity. Metal objects cause reception problems too. It is suggested to start off with the antenna by a window, in the approximate direction of the signal Do not point the antenna at the direction of the signal, but have the antenna side-on to the signal direction.

Once a good signal has been obtained, try different locations, and progressively further from the window.

Place and design your case so the antenna is as far away from the PCB as possible.

## 7.4 Connecting a GPS receiver

The clock has been designed for, and tested with our Micro GPS Receiver (available separately from PV Electronics)



### 7.5 Function of the GPS / RFT indicator LED (D9):

- *No Radio Synchronisation source installed (parameter (12) = 0)*  
LED is permanently off
- *RFT or GPS Synchronisation enabled (parameter (12) = 1-4)*  
The LED will be ON if the clock has synchronised in the last two hours; slowly flashing if the last synchronisation was between 2 hours and 24 hours ago; and off if the last synchronisation is older than 24 hours.
- *Whilst seeking DCF or MSF the LED will flash very briefly once per second.*  
Additionally, the indicator will flash rapidly whilst the clock is actually receiving and processing a valid time frame.

The function of the RFT indicator LED may be summarised in the table below:

<b>Radio Time Source</b>	<b>Seeking DCF/ MSF Frame</b>	<b>Aquiring DCF / MSF Frame</b>	<b>Sync &lt; 2 Hrs</b>	<b>Sync &gt;2 Hrs Sync &lt; 24 Hrs</b>	<b>Sync &gt; 24 Hrs</b>
None	-	-	Off	Off	Off
DCF / MSF	Brief flash each second	Fast Flash	On	Slow Flash	Off
GPS	-	-	On	Slow Flash	Off

# 8. CIRCUIT DIAGRAM

