

Assembly Notes

Finned Case For SN-Class Nixie Clocks




REVISION HISTORY

Issue Number	Date	Reason for Issue
1	10 Nov 2017	New document

1. APPLICABILITY

This case is suitable for the following SN-Class Nixie Clocks:
SN18, SN568, SNR|568

2. PACK CONTENTS

Component	Qty	Further info
Case	1	CNC Machined Case
Plexi base cover	1	
M3 X 1mm washer	3	
M3 X 2mm washer	3	
M3 X 11mm hex Male / Female spacer	3	
Laser- cut lens and tape	1	

3. TOOLS REQUIRED

A small multi tool with hex key and sockets adapters is ideal for assembling the case:

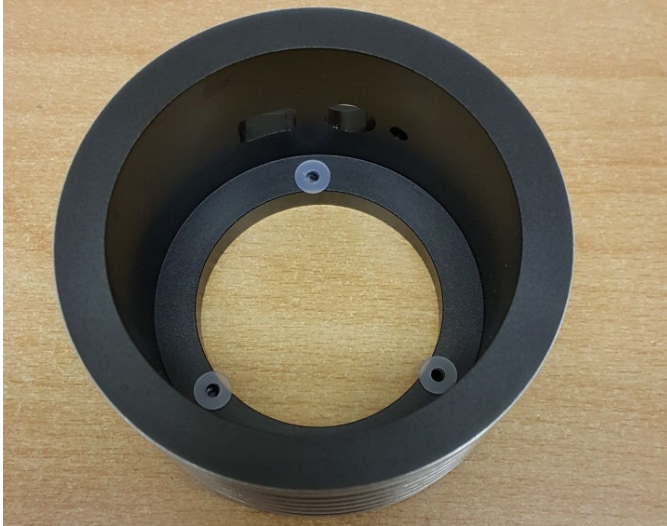


Alternatively, a 2mm allen key and a small pair of long nose pliers will be satisfactory.

4. ASSEMBLY OF THE CASE

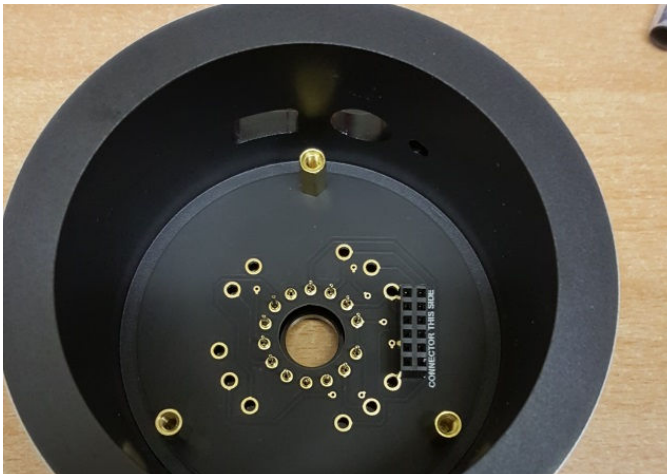
4.1 1mm Washers

Invert the machined case and place the three thinner (1mm) washers over the three M3 tapped holes inside the case.



4.2 Attach tube PCB

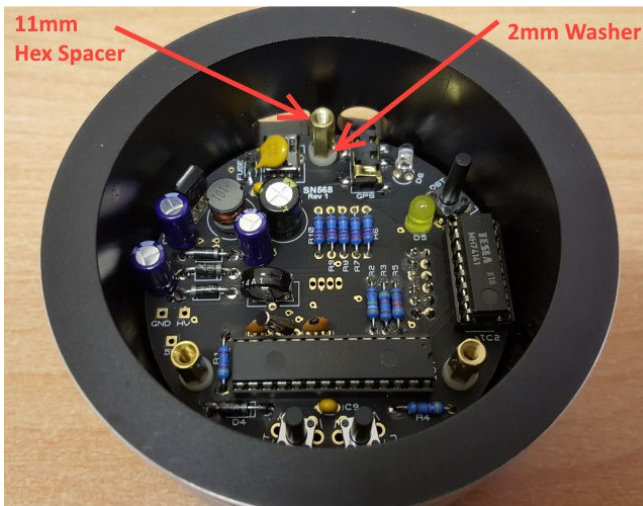
Carefully lower the tube PCB over the washers, taking care to not disturb their position. You may use a ball point pen, or other sharp tool to re-locate them exactly, if they move a little. Then attach the PCB using the three 11mm Male/ Female hex spacers. Tighten well.



4.3 Attach the Driver PCB

Place the driver board into position, ensuring the 6X2 connectors engage perfectly.

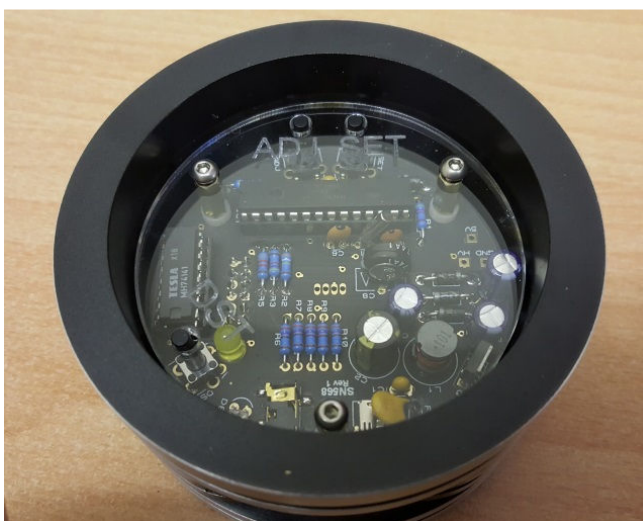
Screw in place with the three other 11mm Male/ Female Hex Spacers supplied with the electronics kit, and a 2mm washer at the base of each hex spacer.



Adjust the Sync LED, D6 so it points towards the hole in the side of the case.

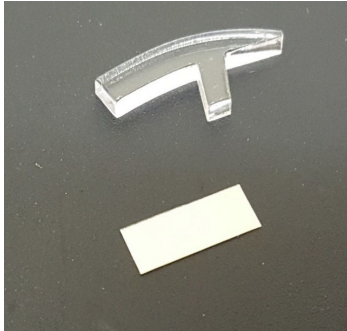
4.4 Place the Base Cover

Peel the protective film from the laser-cut base cover. You can use warm soapy water if any traces of film remain around the engraved areas. Place the rear cover and secure with 3 X M3 screws:



4.5 Sync Lens

Remove any protective film from both sides of the small laser-cut lens, and cut a small piece of the double sided tape and place as shown.



Push the lens into place – the stem goes into the hole in the side of The case, which the Sync LED D6 shines through.

