

Assembly Guide

Plexiglass Case For Nixie Clock 'Halo Chroma'



REVISION HISTORY



Issue Number	Date	Reason for Issue
1	1 April 2021	New document

1. APPLICABILITY

This case is suitable for the following Nixie Clocks:
 'Halo Chroma': All PCB Dates

2 PACK CONTENTS



Component	Qty	Further info
M3 X 6mm screw	8	
M3 X 11mm hex Male / Female spacer	4	
M3 X 11mm hex threaded spacer	4	

3. ASSEMBLY

3.1 Remove all film from the Acrylic components

Ensure all protective film is removed from all parts. Note that not all parts will have film on all sides.

3.2 Mount the hex spacers onto the PCB

Screw the Male / Female hex spacer from the rear of the PCB into the Female / Female spacer. Repeat for all corners of the PCB.



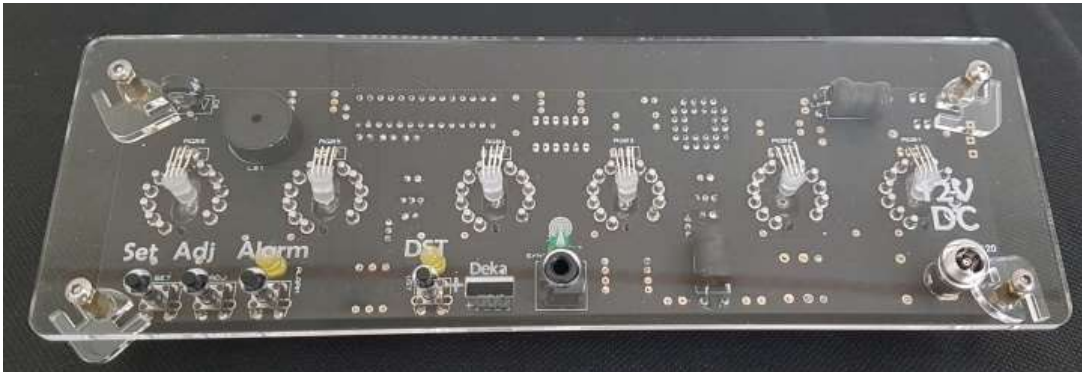
3.3 Place 4 X Connectors

Slide a connector over each hex spacer on the REAR of the PCB as shown below:



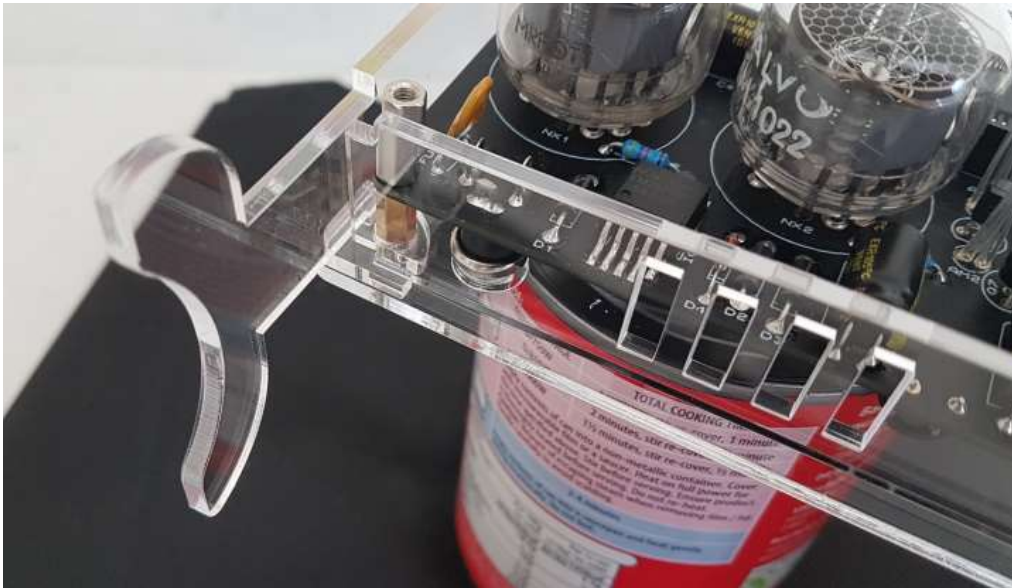
3.4 Place the Rear Cover

Place the rear cover and secure with 4 X M3 screws:



3.5 Place the Long Sides and Feet

Turn the clock over and place on its back. Placing over an edge or other support will help place the feet without them being pushed back out again. Also place the long sides. Rotate the connectors so that the long sides and feet engage in the slots in the connectors.



3.6 Add the remaining 4 connectors

Add the remaining 4 connectors, by sliding over the hex spacers.



3.7 Place the front cover

The front cover can now be placed into position and secured with 4 X M3 screws. You may now also re-tighten the rear screws.

