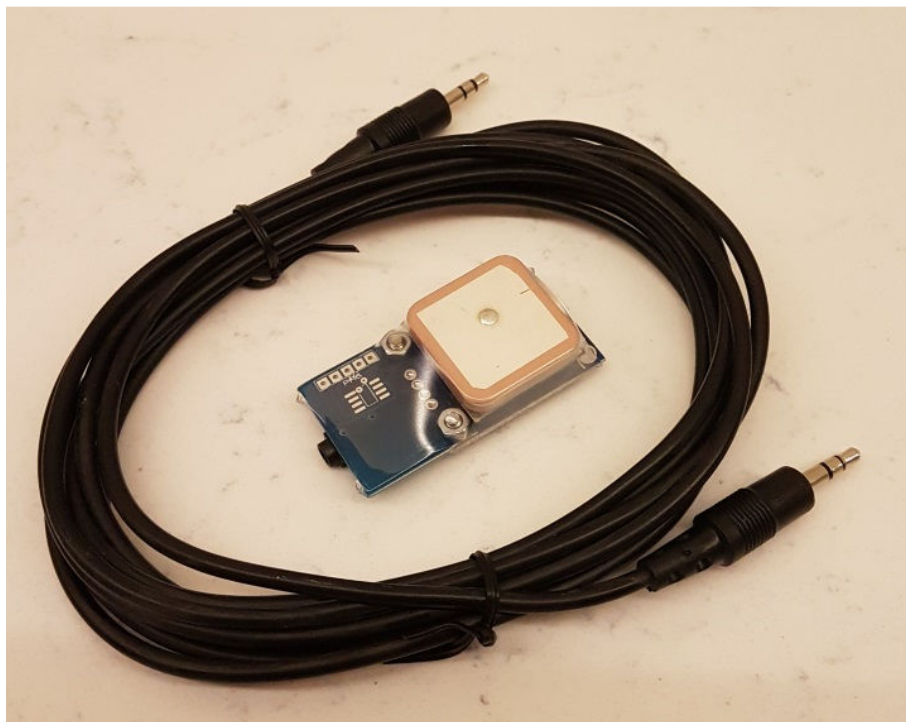


# Assembly Notes And User Guide

## GPS5 Time Receiver For Nixie Clock

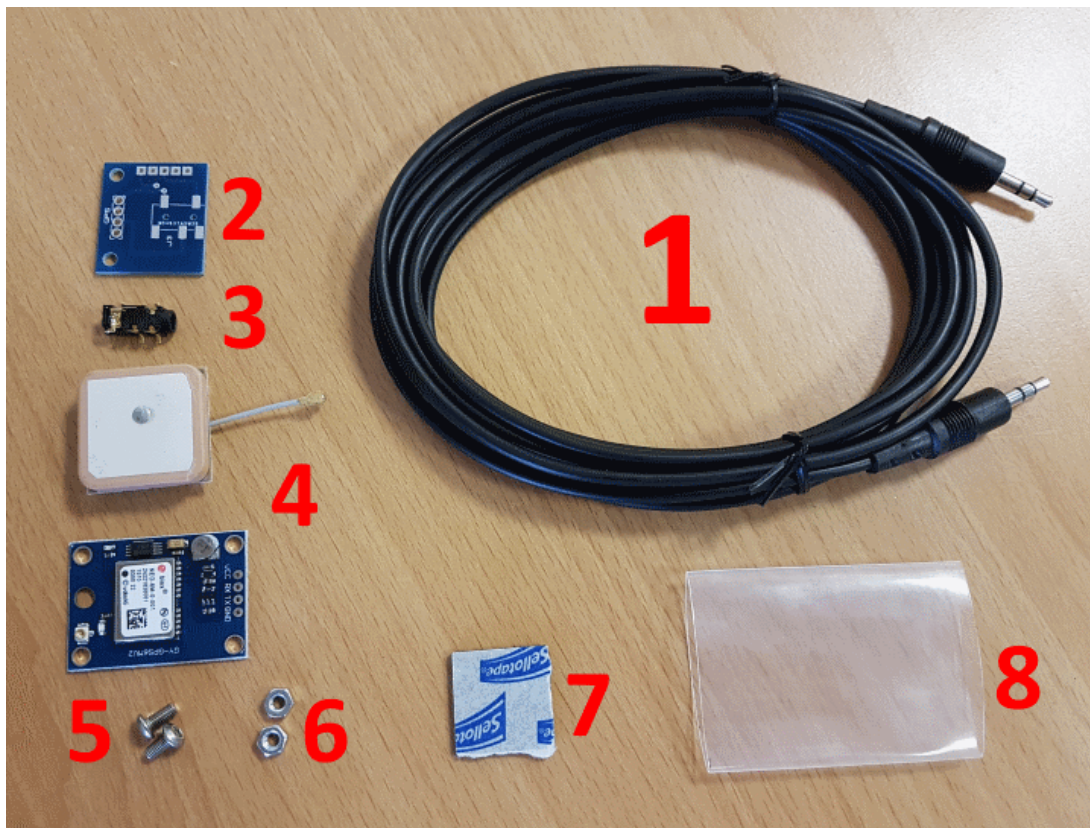


## REVISION HISTORY

Issue Number	Date	Reason for Issue
1	01 February 2018	New Document

### 1. PACK CONTENTS

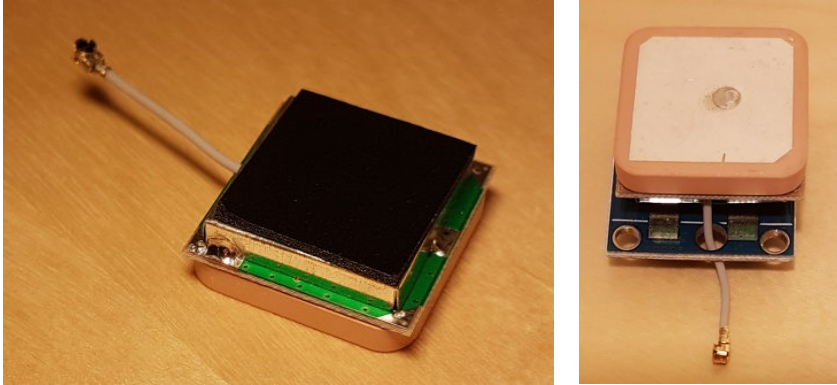
Number	Component	Qty
1	3.0 metre (10 ft) cable	1
2	Adapter PCB	1
3	SMD Jack socket	1
4	GPS Module with antenna	1
5	M3 X 6mm screw	2
6	M3 nut	2
7	Self adhesive foam pad	1
8	Heat shrink	1



## 2. ASSEMBLY

### 2.1 Prepare the GPS Module

First, apply the self adhesive foam pad to the back of the antenna, then stick onto the plain PCB side of the GPS, oriented so that the antenna cable can pass through the hole intended for it.

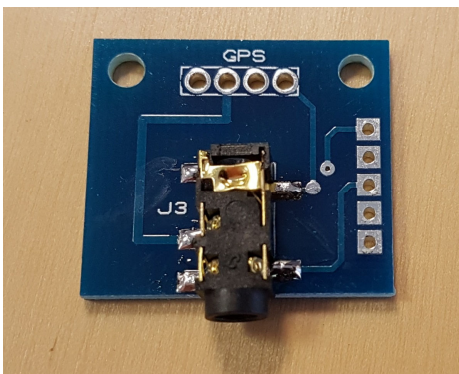


Now clip the antenna connector into the small matching connector on the component side of the GPS module. It helps to press with a hard surface, such as a small block of metal.



### 2.2 Jack Socket

Solder the jack socket to the adapter PCB.



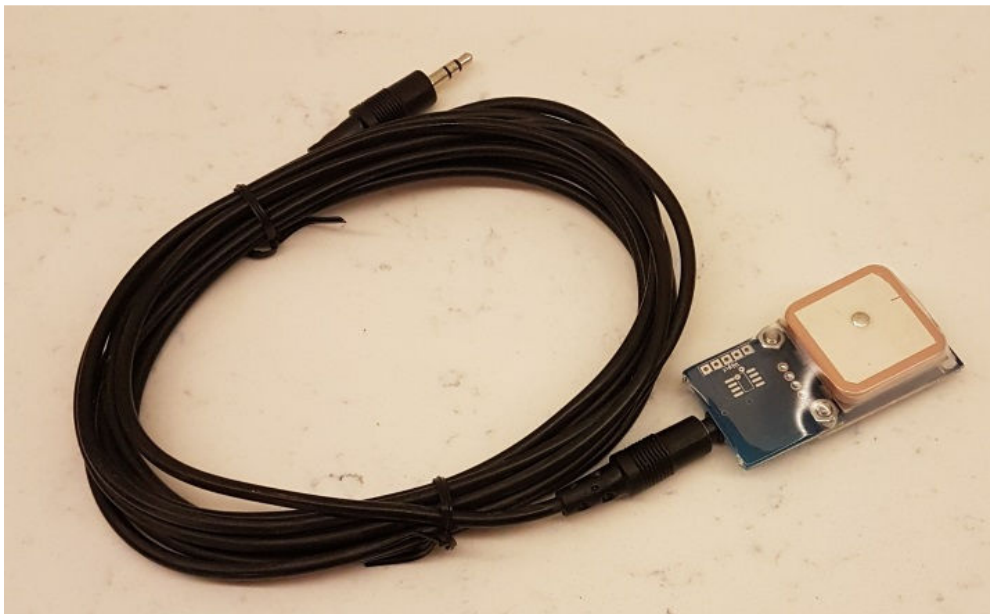
### 2.3 Join the PCBs

Screw the two PCBs together exactly as shown, with the adapter PCB below the GPS PCB. Then fill the four holes with solder.



### 2.4 Apply the Heat Shrink

Slide over the heat shrink tubing and shrink over the assembly with a hot air gun.



### **3. CONFIGURING AND USING THE GPS5 TIME RECEIVER**

- 3.1** Refer to the manual for your clock to find the appropriate configuration settings to enable GPS reception, and set baud rate to 9,600 bps
- 3.2** Place the module as close to a window as possible, for the best view of the sky. The closer to the window, the faster the module will find satellites and synchronise your clock.

Please allow at least 24 hours before contacting us, if the clock does not synchronise.